



WAR PENSIONS QUARTERLY STATISTICS, JUNE 2009

10 September 2009

Theme: Other - Defence

Issued by

Defence Analytical Services
and Advice (DASA)
Ministry of Defence
Ensleigh
Bath
BA1 5AB

Enquiries

Press Office:
Tel: 020 721 83253

Statistical Enquiries:

Dr Kate Harrison
Head of Health Information
Tel: 01225 468456
Fax: 01225 468918
kate.harrison@dasa.mod.uk

Internet

www.dasa.mod.uk

A National Statistics publication

National Statistics are produced to high professional standards. They undergo regular quality assurance reviews to ensure that they meet customer needs. They are produced free from any political interference.

For general enquiries about National Statistics, contact the National Statistics Customer Contact Centre:
Tel: 0845 601 3034
Fax: 01633 652747
Minicom: 01633 812399
E-mail: info@statistics.gov.uk
Internet: www.statistics.gov.uk

INTRODUCTION

This Statistical Notice provides summary statistics on recipients of War Pensions and new claims, awards and appeals made under the War Pension Scheme (WPS).

Pensions, allowances or other payments may be awarded under the WPS to eligible claimants where disablement or death occurs as a result of Service in HM Forces, prior to 6 April 2005.

Figures presented in this Statistical Notice are calculated from data stored on the Service Personnel and Veterans' Agency's War Pensions Computer System.

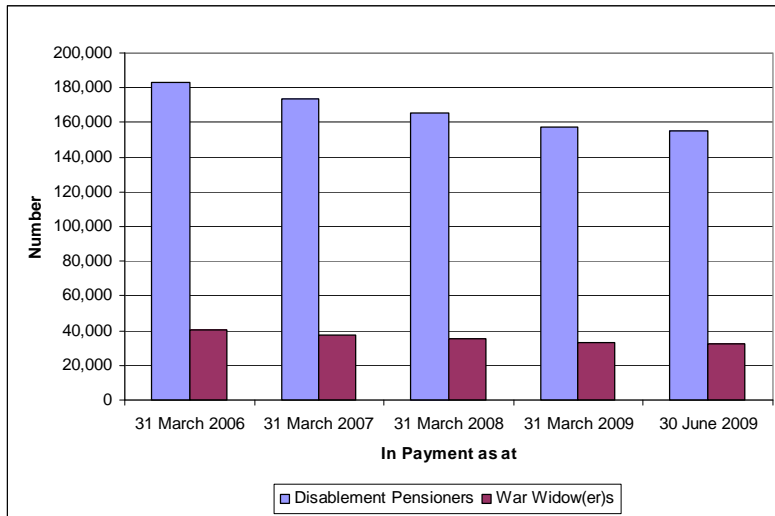
The Armed Forces and Reserve Forces Compensation Scheme (AFCS) came into force on 6 April 2005 to pay compensation for injury, illness or death caused by Service on or after that date. Summary statistics for the AFCS can be found in a separate quarterly report at www.dasa.mod.uk under 'All Other Publications' and 'Health/Medical Statistics'.

KEY POINTS

- As at 30 June 2009, 155,185 War Disablement Pensioners (DPs) were receiving an ongoing pension. This represents a decrease of 7,935 since 30 June 2008.
- As at 30 June 2009, 32,290 War Widow(er)s (WWs) were receiving an ongoing pension. This represents a decrease of 2,365 since 30 June 2008.
- Over half of DPs (57%) and around five-sixths of WWs (86%) were aged 70 and over, as at 30 June 2009.
- Approximately five out of six (85%) DPs received pensions at the 50% rate or below. The largest group was those at the 20% rate. Less than 4% received the 100% disablement rate.
- The average weekly amount received by DPs, including pension and supplementary allowances was £75.17. The average weekly amount received by a DP at the 100% disablement rate was £319.15.
- The average weekly amount received by WWs was £216.14. The average weekly WWs pension was £114.69, with the remainder comprising supplementary allowances.

MAIN FINDINGS

Figure 1: War Pensions in payment, 31 March 2006 to 30 June 2009, numbers

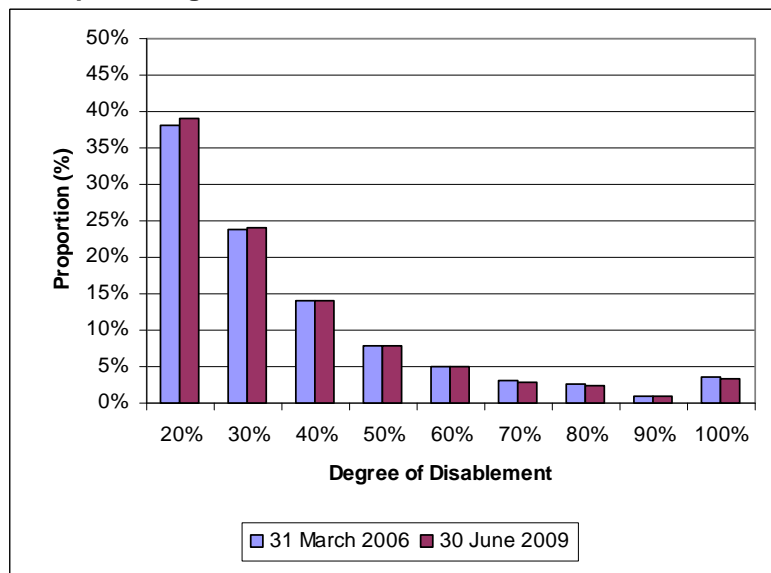


Source Data: Tables 1.1 and 1.2

Figure 1 shows that the number of Disablement Pensioners (DPs) receiving a payment has fallen each year over the past four years, from 182,800 as at 31 March 2006, to 155,185 as at 30 June 2009. Over the same period the number of War Widow(er)s (WWs) fell from 40,125 to 32,290.

This decline is primarily due to the fact that the number of individuals leaving the scheme each year is considerably higher than the number of individuals joining the scheme. The reasons for this are twofold. Firstly, the age profile of current recipients; 57% of DPs and 86% of WWs were aged 70 or over as at 30 June 2009 (see Table 1.6 for age group breakdown). Secondly, compensation claims for injury, illness, or death caused by Service on or after the 6 April 2005 are now processed under the Armed Forces Compensation Scheme (AFCS). As such, the number of claimants joining the WPS is expected to reduce further.

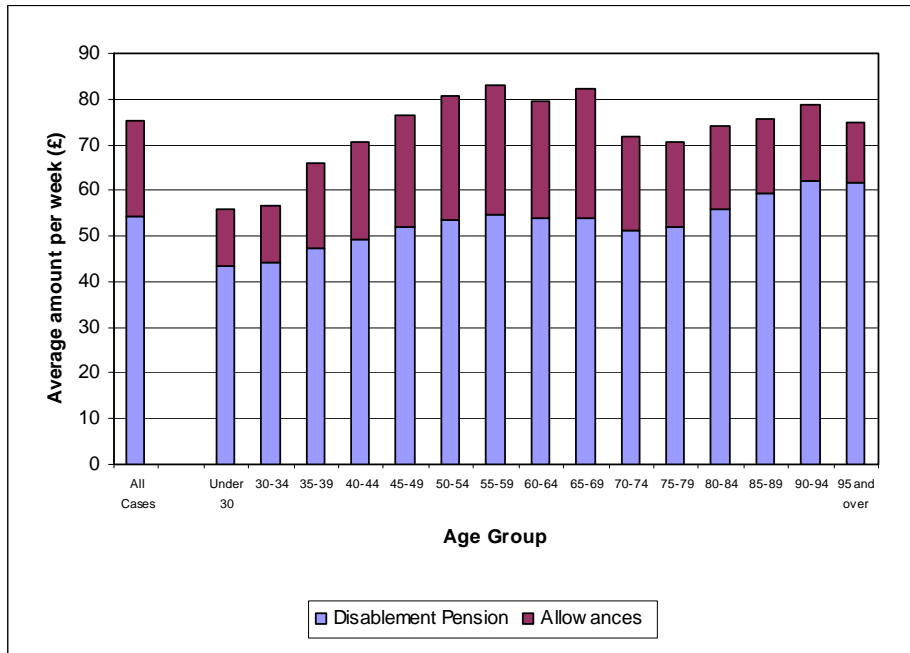
Figure 2: Disablement pensioners at each degree of disablement as at 31 March 2006 and 30 June 2009, percentages



Source Data: Table 1.6

Figure 2 shows that the proportion of DPs at each degree of disablement has remained relatively constant since March 2006, with over 35% receiving pensions for a 20% degree of disablement. As at 30 June 2009, approximately five out of six (85%) DPs received a pension at the 50% degree of disablement or below. Fewer than 4% received a 100% degree of disablement pension.

Figure 3: Disablement pensioners' average weekly pension and allowances as at 30 June 2009, by age group, currency (£)



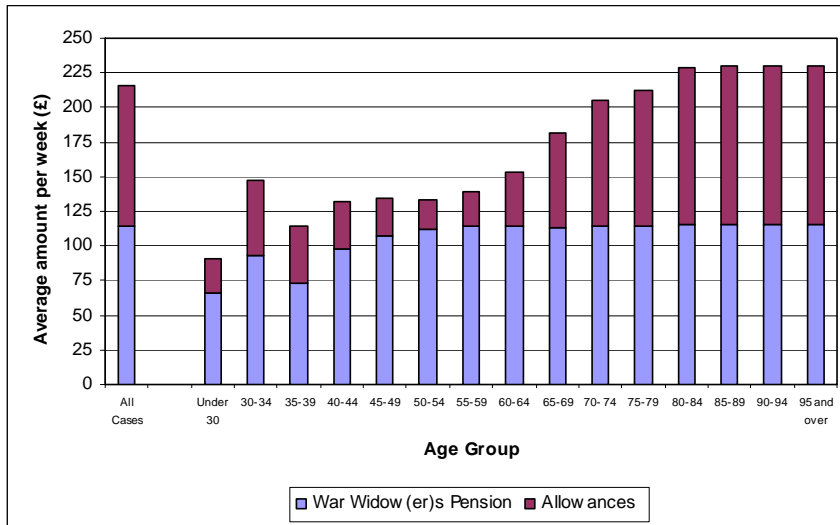
Source Data: Table 1.7

The average weekly amount received by DPs as at 30 June 2009 was £75.17 (**Figure 3**). Of this, £54.24 was from their disablement pension, whilst £20.92 came from supplementary allowances. The average weekly amount received by a DP at the 100% disablement rate was £319.15.

As at 30 June 2009, DPs aged 90-94 received the highest weekly pension of £62.17, whilst DPs aged 55-59 received the highest weekly supplementary allowance of £28.54. Disablement pensions increased with each age group and then leveled off between the age groups 50-54 and 65-69 with an average weekly pension of £54.03. At age groups 70-74 there was a drop in weekly pensions before they began to increase again. Similarly, supplementary allowances increased with each age group until the age group 50-54, then began to decrease at age group 70-74 onwards.

Analysis of Disablement Pension amounts and age groups shows a significant upward trend of amount of pension by age group (Linear Regression, $r^2=0.83$).

Figure 4: War Widow(er)s' average weekly pension and allowances as at 30 June 2009 by age group, currency (£)



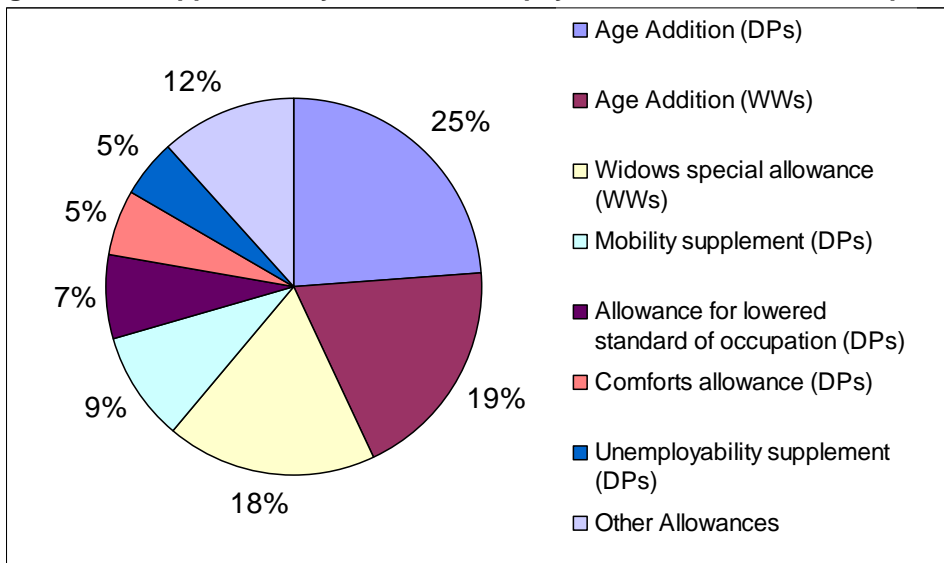
Source Data: Table 1.7

The average weekly amount received by WWs as at 30 June 2009 was £216.14 (**Figure 4**). Of this, £114.69 was from their pension, whilst £101.45 came from supplementary allowances.

As at 30 June 2009 WWs aged 95 and over received the highest average weekly pension amount (£115.86), and WWs aged 85-89 received the highest average weekly supplementary allowances amount (£114.48).

With the exception of higher payments to WWs aged 30-34, WWs pensions increased with each age group and leveled off at age group 55-59 to 95 and over, with an average weekly pension of £114.85. From the age group 30-34, WW average weekly supplementary allowances decrease up until the age group 50-54, before they increase at age group 55-59 onwards.

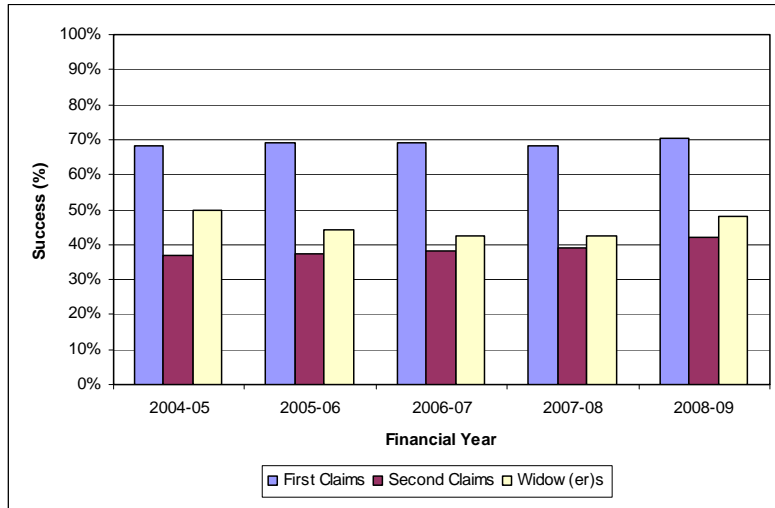
Figure 5: All supplementary allowances in payment as at 30 June 2009, percentages



Source Data: Table 1.8

Figure 5 shows that the most common supplementary allowances in payment as at 30 June 2009 were DPs and WWs Age Additions, accounting for 44% of all allowances in payment. The next most common allowance was Widow(er)s' Special Allowance, accounting for 18% of all allowances in payment. This is a supplementary pension payable to Widow(er)s of Service personnel who died or left the services before 31 March 1973, as they would not benefit from the improvements made to the MOD's Armed Forces Pension Scheme after that date.

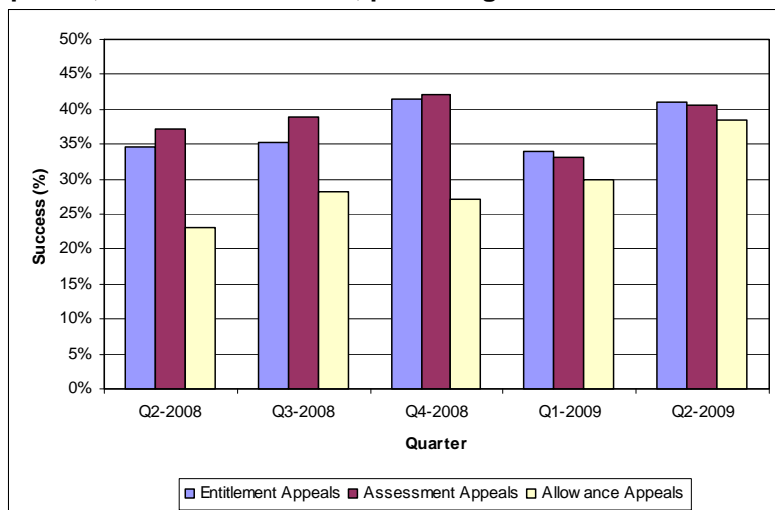
Figure 6: Successful first claims, second claims, and widow(er)s claims (%) by financial year, 2004-05 to 2008-09, percentages



Source Data: Table 2.2

Figure 6 shows that in the financial year 2008-09, 70% of first claims resulted in an ongoing war pension or gratuity, 42% of second claims resulted in an increased entitlement or new award, and 48% of war widow(er)s' claims resulted in an ongoing widow(er)s' pension.

Figure 7: Successful entitlement appeals, assessment appeals and allowance appeals (%) by quarter, Q2-2008 to Q2-2009, percentages



Source Data: Table 2.6

Figure 7 shows that successful appeals have varied over the last five quarters. During Q2-2009, 41% of entitlement appeals (including WWs entitlement appeals) were successful, 41% of assessment appeals resulted in an increased award and 38% of allowance appeals were successful, compared to 35%, 37%, and 23%, respectively, in Q2-2008.

CONVENTIONS

In line with DASA's Rounding Policy to maintain anonymity of claimants, all figures have been rounded to the nearest five (totals may not add due to rounding). Percentages have been rounded to the nearest 1%.

~	Negligible (fewer than 5)
<i>r</i>	Revised
	Break in series
Q1	1 January to 31 March
Q2	1 April to 30 June
Q3	1 July to 30 September
Q4	1 October to 31 December

Section 1: Recipients of War Pensions

Table 1.1: War Pensions in payment by type of pension, principal scheme and quarter, 30 June 2008 to 30 June 2009.....	8
Table 1.2: War Pensions in payment by type of pension, gender and financial year end, 31 March 2005 to 30 June 2009.....	9
Table 1.3: War Pensions flows by type of pension and financial year, 2004-05 to 2008-09	9
Table 1.4: Disablement Pensions in payment by degree of disablement as at 30 June 2009	10
Table 1.5: Pensioners by type of pension, principal scheme (DPs) and Government Office Region (GOR) as at 30 June 2009.....	11
Table 1.6: War Pensions in payment by pension type, percentage disablement and age band as at 30 June 2009.....	12
Table 1.7: Average weekly amounts of pension entitlement by type, percentage disablement and age band as at 30 June 2009.....	13
Table 1.8: Supplementary allowances in payment by type of allowance and quarter as at 30 June 2009.....	14
Table 1.8a: Supplementary allowances in payment by type of allowance and financial year end, 31 March 2006 to 30 June 2009.....	14

Table 1.1: War Pensions in payment by type of pension, principal scheme and quarter, 30 June 2008 to 30 June 2009, numbers

	Awards in payment at:				
	30-Jun-08	30-Sep-08	31-Dec-08	31-Mar-09	30-Jun-09
ALL IN PAYMENT	198,645	196,290	193,640	190,745	188,295
Disablement Pensioners	163,120	161,310	159,300	157,125	155,185
in receipt of an ongoing war pension					
1914 war	0	0	0	0	0
Inter-war	50	45	40	40	40
1939 war onwards	160,000	158,250	156,325	154,240	152,375
Civilian	1,645	1,620	1,585	1,550	1,510
Polish	660	645	625	595	575
Mercantile marine	765	740	720	700	685
Not known	~	5	~	~	~
War Widow(er)s	34,655	34,140	33,500	32,790	32,290
War widows pension	34,585	34,075	33,430	32,715	32,215
War widowers pension	70	70	70	70	75
Other Pensioners	870	840	840	830	820
Disablement pensioners (ALSO allowance only)	415	405	400	400	395
War orphans pension	30	30	30	30	30
War parents pension	25	25	25	25	20
Adult dependant pension	10	10	10	10	10
Unmarried dependant pension	~	~	~	~	~
Child allowance only	385	370	375	370	365

Table 1.2: War Pensions in payment by type of pension, gender and financial year end, 31 March 2005 to 31 March 2009, numbers⁽¹⁾

	Awards in payment at:				
	31-Mar-05	31-Mar-06	31-Mar-07	31-Mar-08	31-Mar-09
ALL IN PAYMENT	235,300 	223,850	212,535	201,265	190,745
Men	184,410	175,660	166,910	158,455	150,655
Women	50,890	48,190	45,625	42,810	40,090
Disablement Pensioners	191,750 	182,800	173,850	165,165	157,125
Men	183,675	174,955	166,225	157,780	150,005
Women	8,075	7,845	7,625	7,385	7,120
War Widow(er)s	42,580 	40,125	37,795	35,235	32,790
Men	55	60	65	70	70
Women	42,525	40,065	37,730	35,165	32,715
Other Pensioners	970 	925	890	865	830
Men	680	645	615	605	580
Women	290	280	270	260	255

Note: (1) The discontinuity between the financial years 2004-05 and 2005-06 is due to improvements in data processing.

Table 1.3: War Pensions flows by type of pension and financial year, 2004-05 to 2008-09, numbers⁽¹⁾

	Financial Year:				
	2004-05	2005-06	2006-07	2007-08	2008-09
ALL IN PAYMENT	235,300 	223,850	212,535	201,265	190,745
Total intake in financial year	4,215	3,775	3,295	2,940	3,410
Total outflow in financial year	16,500	15,165	14,610	14,205	13,930
Disablement Pensioners	191,750 	182,800	173,850	165,165	157,125
Intake during financial year	2,955	2,700	2,380	2,170	2,590
Outflow during financial year	12,750	11,670	11,345	10,835	10,640
War Widow(er)s	42,580 	40,125	37,795	35,235	32,790
Intake during financial year	1,210	1,000	895	755	795
Outflow during financial year	3,665	3,460	3,225	3,315	3,245
Other Pensioners	970 	925	890	865	830
Intake during financial year	50	75	20	15	25
Outflow during financial year	85	35	40	55	45

Note: (1) The discontinuity between the financial years 2004-05 and 2005-06 is due to improvements in data processing.

Table 1.4: Disablement Pensions in payment by degree of disablement as at 30 June 2009, numbers

Degree of disablement (Percentage)								
Men and Women	TOTAL	1914 War	Inter War	1939 War onwards	Civilian	Polish	Mercantile Marine	Not Known
ALL	155,185	0	40	152,375	1,510	575	685	~
20	60,710	0	10	60,035	320	150	200	~
30	37,150	0	10	36,465	335	150	185	0
40	21,645	0	10	21,170	260	95	115	0
50	12,040	0	~	11,780	145	55	60	0
60	7,575	0	0	7,420	90	35	35	0
70	4,580	0	~	4,450	75	25	30	0
80	3,750	0	~	3,645	65	25	20	0
90	1,295	0	~	1,245	30	5	10	0
100	5,155	0	~	4,925	165	30	25	0
Not Known ⁽¹⁾	1,280	0	0	1,240	30	10	~	~

Men

ALL	148,125	0	40	146,255	585	555	685	~
20	58,075	0	10	57,615	115	140	200	~
30	35,560	0	10	35,100	120	145	185	0
40	20,650	0	10	20,320	115	90	115	0
50	11,510	0	~	11,340	50	55	60	0
60	7,230	0	0	7,130	35	30	35	0
70	4,350	0	~	4,265	30	25	30	0
80	3,550	0	~	3,480	30	25	20	0
90	1,235	0	~	1,205	10	5	10	0
100	4,840	0	~	4,710	70	30	25	0
Not Known ⁽¹⁾	1,115	0	0	1,095	5	10	~	~

Women

ALL	7,060	0	0	6,115	925	20	0	0
20	2,635	0	0	2,420	205	10	0	0
30	1,590	0	0	1,370	215	~	0	0
40	995	0	0	850	140	~	0	0
50	530	0	0	435	95	0	0	0
60	345	0	0	290	55	~	0	0
70	230	0	0	185	45	~	0	0
80	200	0	0	165	35	0	0	0
90	60	0	0	40	20	0	0	0
100	310	0	0	215	95	~	0	0
Not Known ⁽¹⁾	170	0	0	145	20	~	0	0

Note: (1) 'Not known' consists of those entitled to a disablement pension but with no percentage disability recorded. These include clerical overrides and suspended cases

Table 1.5: Pensioners by type of pension, principal scheme (DPs) and Government Office Region (GOR) as at 30 June 2009, numbers

GOR	Disablement Pensioners										
	All Pensioners	All DPs	1914 War	Inter-war	1939 War onwards	Civilian	Polish	Mercantile Marine	Not known	War Widow(er)s	Other Pensioners ⁽²⁾
ALL	188,295	155,185	0	40	152,375	1,510	575	685	~	32,290	820
North East	12,220	10,835	0	0	10,695	55	10	75	~	1,325	60
North West	21,340	17,975	0	~	17,550	220	50	145	~	3,270	90
Yorkshire and the Humber	13,690	11,245	0	~	11,130	50	35	30	0	2,365	80
East Midlands	11,830	9,830	0	~	9,725	50	40	15	0	1,955	45
West Midlands	11,065	8,915	0	0	8,795	70	40	10	0	2,105	45
East of England	13,255	10,360	0	~	10,155	160	25	20	0	2,850	40
London	7,165	5,290	0	~	4,990	215	65	10	0	1,845	30
South East	24,505	19,315	0	10	18,930	290	35	55	0	5,095	90
South West	24,160	20,005	0	5	19,740	185	35	35	~	4,045	110
Wales	10,660	8,945	0	~	8,835	50	15	45	0	1,670	45
Scotland	18,310	15,720	0	~	15,530	65	35	90	0	2,515	75
N. Ireland	4,440	3,720	0	0	3,705	10	0	5	0	695	25
Other UK ⁽¹⁾	565	455	0	0	450	~	0	~	0	105	~
UK Unknown	835	630	0	0	615	10	~	5	0	200	5
Overseas	14,035	11,740	0	5	11,325	90	180	140	0	2,235	65
Not Known	225	205	0	0	205	~	~	0	0	15	~

Note: (1) Other UK includes Isle of Man and Channel Islands.

(2) 'Other Pensioners' includes War Orphans, War Parents, Adult Dependants, Unmarried Dependants, Juvenile Dependants, Child Allowance Only and Allowance for Lowered Standard of Occupation Only Pensioners.

Table 1.6: War Pensions in payment by pension type, percentage disablement and age band as at 30 June 2009, numbers

AGE GROUP	All Pensioners	Disablement Pensioners										Not Known ⁽¹⁾	War Widow(er)s	Other Pensioners ⁽²⁾
		All DPs	20%	30%	40%	50%	60%	70%	80%	90%	100%			
ALL	188,295	155,185	60,710	37,150	21,645	12,040	7,575	4,580	3,750	1,295	5,155	1,280	32,290	820
Under 30	1,345	1,210	600	275	105	50	30	15	10	~	20	110	20	115
30 to 34	2,135	2,070	1,055	460	235	95	70	30	30	~	25	75	50	10
35 to 39	6,205	6,010	2,720	1,470	805	375	230	110	75	15	105	100	135	60
40 to 44	8,240	7,945	3,500	1,940	1,055	535	350	165	125	20	175	85	245	55
45 to 49	10,225	9,825	4,080	2,375	1,330	755	425	245	180	70	290	70	340	60
50 to 54	9,650	9,075	3,560	2,205	1,300	710	465	250	185	50	295	55	490	80
55 to 59	9,170	8,460	3,220	2,035	1,255	670	445	250	205	55	280	50	625	85
60 to 64	12,240	11,120	4,505	2,610	1,490	840	540	350	280	85	365	55	1,020	100
65 to 69	12,785	11,215	4,720	2,455	1,470	855	540	325	285	100	385	75	1,480	90
70 to 74	20,150	17,760	7,825	4,355	2,205	1,150	715	435	360	110	485	125	2,315	75
75 to 79	20,130	16,610	6,980	4,145	2,175	1,205	630	415	375	120	445	125	3,485	30
80 to 84	24,980	18,920	6,995	4,505	2,740	1,585	1,010	630	475	170	700	110	6,045	20
85 to 89	35,690	25,900	8,300	6,235	4,055	2,310	1,545	985	840	350	1,110	165	9,770	20
90 to 94	12,810	7,960	2,325	1,835	1,265	795	515	330	285	125	420	70	4,830	15
95 +	2,540	1,100	330	255	165	110	65	45	45	20	55	15	1,440	5

Note: (1) 'Not known' consists of those entitled to a disablement pension but with no percentage disability recorded. These include clerical overrides and suspended cases

(2) 'Other Pensioners' includes War Orphans, War Parents, Adult Dependants, Unmarried Dependants, Juvenile Dependants, Child Allowance Only and Allowance for Lowered Standard of Occupation Only Pensioners.

Table 1.7: Average weekly amounts of pension entitlement by type, percentage disablement and age band as at 30 June 2009, currency (£)

(All figures are in £s)

AGE GROUP	Disablement Pension										War Widow(er)s
	All DPs	20%	30%	40%	50%	60%	70%	80%	90%	100%	
PENSION & ALLOWANCES											
All Cases	75.17	31.74	49.33	84.80	109.67	145.76	170.02	216.57	238.18	319.15	216.14
Under 30											
30 to 34	56.82	30.61	45.60	85.10	118.67	155.18	161.68	192.66	281.86	314.31	147.04
35 to 39	66.05	31.40	47.34	92.55	114.15	156.62	201.84	248.63	263.65	349.34	114.75
40 to 44	70.76	31.82	49.18	90.04	121.39	168.50	194.83	255.89	295.12	349.64	131.78
45 to 49	76.24	32.23	50.34	89.59	122.09	167.10	192.71	240.83	269.76	342.16	134.11
50 to 54	80.71	33.16	51.72	91.14	125.62	166.30	198.44	253.24	280.65	337.66	133.29
55 to 59	83.10	32.98	52.61	90.74	124.68	171.36	203.11	247.36	258.33	344.11	139.16
60 to 64	79.67	32.41	51.42	87.25	118.62	164.79	184.31	239.06	288.72	346.49	152.96
65 to 69	82.04	32.42	51.35	92.82	121.38	166.97	196.78	262.40	279.20	354.67	181.79
70 to 74	71.73	31.64	50.07	88.12	112.68	154.49	188.48	239.85	259.82	347.15	205.60
75 to 79	70.67	31.47	49.77	85.64	108.60	147.10	171.09	221.53	246.21	327.96	212.64
80 to 84	74.17	31.12	48.03	79.75	102.28	129.94	153.53	202.84	221.86	312.05	228.82
85 to 89	75.83	31.04	47.19	76.96	95.17	120.77	141.28	179.78	210.06	285.50	230.08
90 to 94	78.80	31.14	47.29	76.23	94.60	119.10	139.82	166.81	198.09	264.00	230.11
95 +	74.89	30.91	46.58	74.50	92.92	114.00	129.29	157.42	200.74	242.81	229.63
PENSION ONLY											
All Cases	54.24	30.41	45.59	60.57	75.66	90.82	106.2	121.39	136.62	150.87	114.69
Under 30											
30 to 34	44.20	30.20	44.95	57.88	72.54	85.53	100.42	113.66	103.76	127.07	93.04
35 to 39	47.38	30.09	45.10	58.62	71.87	86.74	102.54	118.35	126.41	145.95	72.64
40 to 44	49.08	30.30	45.19	59.37	73.70	88.33	103.57	119.48	135.97	141.43	97.38
45 to 49	51.79	30.37	45.38	59.99	74.55	89.49	105.82	119.04	131.96	144.79	107.19
50 to 54	53.46	30.39	45.56	60.29	75.13	90.32	105.93	120.34	136.59	148.75	111.72
55 to 59	54.56	30.38	45.59	60.63	75.74	91.07	106.39	121.48	137.09	149.99	113.98
60 to 64	54.05	30.46	45.64	60.73	75.87	91.26	106.06	121.49	136.97	151.63	114.74
65 to 69	54.03	30.46	45.66	60.92	76.10	91.06	106.27	121.85	137.16	152.14	113.70
70 to 74	51.23	30.46	45.69	60.89	76.14	91.39	106.58	121.72	137.12	152.33	114.17
75 to 79	52.03	30.45	45.69	60.93	76.16	91.36	106.63	121.90	137.15	152.15	114.92
80 to 84	56.03	30.45	45.69	60.94	76.16	91.41	106.60	121.91	137.15	152.38	115.00
85 to 89	59.34	30.46	45.69	60.93	76.17	91.41	106.66	121.88	137.08	152.39	115.60
90 to 94	62.17	30.47	45.70	60.95	76.18	91.42	106.63	121.82	137.16	152.39	115.72
95 +	61.56	30.48	45.70	60.90	76.20	91.44	106.68	121.88	137.16	152.35	115.86
ALLOWANCES ONLY (including Widows special allowance)											
All Cases	20.92	1.33	3.74	24.23	34.00	54.94	63.82	95.19	101.56	168.28	101.45
Under 30											
30 to 34	12.62	0.40	0.65	27.22	46.13	69.65	61.27	79.01	178.11	187.24	54.01
35 to 39	18.68	1.30	2.24	33.93	42.28	69.88	99.30	130.27	137.24	203.39	42.11
40 to 44	21.68	1.53	3.99	30.67	47.69	80.18	91.26	136.40	159.14	208.22	34.39
45 to 49	24.46	1.85	4.96	29.59	47.54	77.61	86.89	121.79	137.81	197.37	26.92
50 to 54	27.25	2.77	6.16	30.85	50.49	75.99	92.51	132.90	144.06	188.91	21.57
55 to 59	28.54	2.60	7.02	30.12	48.94	80.28	96.72	125.88	121.24	194.12	25.18
60 to 64	25.62	1.96	5.78	26.52	42.75	73.53	78.25	117.57	151.76	194.87	38.22
65 to 69	28.02	1.96	5.69	31.90	45.29	75.91	90.51	140.56	142.04	202.53	68.09
70 to 74	20.51	1.19	4.38	27.23	36.54	63.10	81.90	118.13	122.70	194.82	91.44
75 to 79	18.64	1.03	4.08	24.71	32.44	55.75	64.46	99.63	109.06	175.81	97.73
80 to 84	18.14	0.67	2.33	18.81	26.12	38.53	46.93	80.93	84.71	159.67	113.82
85 to 89	16.50	0.57	1.50	16.02	19.00	29.35	34.62	57.90	72.98	133.11	114.48
90 to 94	16.63	0.67	1.59	15.28	18.43	27.69	33.20	44.99	60.93	111.61	114.38
95 +	13.33	0.43	0.88	13.60	16.72	22.56	22.61	35.53	63.58	90.45	113.76

Table 1.8: Supplementary allowances in payment by type of allowance and quarter, 30 June 2008 to 30 June 2009, numbers

Allowance type	Awards in payment at:				
	30-Jun-08	30-Sep-08	31-Dec-08	31-Mar-09	30-Jun-09
ALL ALLOWANCES	167,055	164,530	161,870	158,815	156,730
Age 80 addition (NI) (Disablement & Widow(er))	1,520	1,480	1,430	1,385	1,345
Age addition - Disablement	40,700	39,945	39,100	38,100	37,385
Age addition – Widows	31,010	30,540	29,915	29,230	28,825
Allowance for lowered standard of occupation	11,490	11,495	11,530	11,555	11,565
Clothing allowance	4,030	3,965	3,890	3,805	3,740
Comforts allowance	8,975	8,875	8,755	8,660	8,575
Constant attendance allowance	3,085	3,040	2,975	2,930	2,900
Exceptionally severe disablement allowance	605	600	595	595	600
Severe disablement occupational allowance	10	10	5	5	5
Invalidity allowance	6,700	6,660	6,595	6,550	6,495
Mobility supplement	15,235	15,130	14,995	14,795	14,690
Unemployability supplement	7,970	7,895	7,800	7,725	7,645
Modified unemployability supplement	35	35	35	30	30
Additional allowance spouse	1,705	1,675	1,635	1,590	1,550
Modified allowance for spouse	195	190	185	180	175
Additional allowance dependant	~	~	~	~	~
Additional allowance child	1,265	1,130	1,200	1,225	1,235
Child allowance	920	780	815	830	850
Over age infirm child allowance	305	300	300	290	285
Modified over age infirm child allowance	10	10	10	10	10
Temporary allowance Widow(er)	180	195	210	205	160
Widow(er)s rent allowance	430	425	440	385	395
Widow(er)s special allowance	30,680	30,140	29,470	28,735	28,255

Table 1.8a: Supplementary allowances in payment by type of pension, 31 March 2006 to 30 June 2009, numbers and average weekly amount (£)

	Awards in payment at:				
	31-Mar-06	31-Mar-07	31-Mar-08	31-Mar-09	30-Jun-09
ALL ALLOWANCES	191,145	180,475	169,470	158,815	156,730
Average Weekly Allowances Entitlement (in £s)					
Disablement Pensioners	17.08	18.05	18.93	19.86	20.92
War Widow(er)s	86.66	90.32	92.9	97.04	101.45

Section 2: Number of claims, awards and appeals

Table 2.1: Claims registered during quarter, Q2-2008 to Q2-2009.....	16
Table 2.1a: Claims registered during quarter by claim type, Q2-2008 to Q2-2009.....	17
Table 2.2: Claim outcomes by financial year, 2004-05 to 2008-09.....	19
Table 2.2a: Claim outcomes by quarter, Q2-2008 to Q2-2009.....	20
Table 2.3: Successful gratuity & nil percentage awards cleared during financial year, 2004-05 to 2008-09.....	21
Table 2.4: First claims to supplementary allowances cleared during quarter, by allowance type and outcome, Q2-2008 to Q2-2009.....	22
Table 2.4a: First claims to supplementary allowances automatically awarded during quarter, by allowance type, Q2-2008 to Q2-2009.....	23
Table 2.5: Appeals cleared (to Pensions Appeal Tribunal or during preparation) during quarter, by type, Q2-2008 to Q2-2009.....	23
Table 2.6: Pensions Appeal Tribunal decisions during quarter by appeal type, Q2-2008 to Q2-2009.....	24

Table 2.1: Claims registered during quarter, Q2-2008 to Q2-2009, numbers

Claim type	Claims registered during:				
	Q2-2008	Q3-2008	Q4-2008	Q1-2009	Q2-2009
All Claims	8,270	8,270	7,785	8,320	7,950
Disablement claims	4,025	3,905	3,835	3,705	3,850
War Widow(er)s claims	425	440	365	460	365
Supplementary allowance claims	1,465	1,495	1,370	1,405	1,260
Supplementary allowance reviews	785	725	655	960	825
Medical expenses	1,015	1,005	895	1,015	900
Appeals	560	700	665	775	750

Table 2.1a: Claims registered during quarter by claim type, Q2-2008 to Q2-2009, numbers

Claim type	Claims registered during:				
	Q2-2008	Q3-2008	Q4-2008	Q1-2009	Q2-2009
Disablement claims	4,025	3,905	3,835	3,705	3,850
Current invaliding	230	235	175	195	135
First claim to pension	1,475	1,410	1,505	1,405	1,430
Further condition	805	830	795	865	910
Deterioration	1,010	995	930	835	1,025
Departmental review	35	30	35	35	25
Conditional list review	465	400	400	370	330
War Widow(er)s claims	425	440	365	460	365
Widow(er)s	410	415	350	435	345
Restored Widow(er)s	15	25	10	20	15
Review Widow(er)s	~	~	0	~	~
Supplementary allowance claims	1,465	1,495	1,370	1,405	1,260
Allowance for lowered standard of occupation	165	145	185	170	165
Clothing allowance	60	25	35	40	45
Constant attendance allowance	120	110	120	120	120
Mobility supplement	275	315	275	285	245
Unemployability supplement	65	75	60	60	60
Additional allowance spouse	25	20	25	20	25
Additional allowance dependant	0	0	0	~	0
Additional allowance child	30	25	35	20	35
Child allowance only	~	10	~	~	~
Widow(er)s child allowances	0	0	0	0	0
Widow(er)s rent allowance	70	105	65	40	75
Temporary allowance Widow(er)	110	120	130	95	90
Funeral expenses	540	540	445	550	410
Supplementary allowance reviews⁽¹⁾	785	725	655	960	825
Allowance for lowered standard of occupation	355	330	290	430	380
Constant attendance allowance	40	25	35	35	35
Mobility supplement	45	50	60	60	35
Unemployability supplement	120	85	110	125	120
Additional allowance spouse	55	40	55	240	70
Additional allowance dependant	~	0	0	~	0
Child allowance ⁽²⁾	170	190	110	70	190
Appeals	560	700	665	775	750
Entitlement - Disablement	160	200	195	245	220
Entitlement - Widow(er)s	45	55	35	30	30
Assessment	255	345	330	400	405
Supplementary Allowances	75	85	80	80	65
Miscellaneous	25	15	20	25	25

Table 2.1a: Claims registered during quarter by claim type, Q2-2008 to Q2-2009, numbers (Continued)

Claim type	Claims registered during:				
	Q2-2008	Q3-2008	Q4-2008	Q1-2009	Q2-2009
Medical expenses⁽³⁾	1,015	1,005	895	1,015	900
Appliance	5	~	5	~	5
Chiropody	~	0	~	~	0
Convalescence	35	40	20	25	20
Dental	35	20	20	20	15
Hearing aid	20	10	10	20	10
Home nursing equipment	15	10	10	10	10
Hospital travel expenses	65	70	75	70	55
House adaptation grant	55	55	35	35	30
Prescription	10	20	10	10	10
Priority treatment	135	110	75	100	135
Private treatment	20	15	10	20	10
Provision of treatment	270	275	255	290	225
Remedial treatment	280	315	290	330	310
Skilled nursing care	10	10	5	~	~
Spectacles	20	20	20	30	25
Treatment allowance (inc. loss of earnings)	35	35	45	45	35

Note: (1) Reviews of allowances which involve rates of pay are traditionally held in the first quarter of the year.

(2) Contains widow(er)s' child allowance and child allowance only reviews.

(3) Excludes NI and Eire.

Table 2.2: Claim outcomes by financial year, 2004-05 to 2008-09, numbers and percentages

Claim Type	Financial Year:									
	2004-05		2005-06 ⁽²⁾		2006-07		2007-08		2008-09	
	Number	%	Number	%	Number	%	Number	%	Number	%
All First Claims	7,590		7,515		6,765		5,750		7,125	
Awarded 20–100%	1,725	23%	1,740	23%	1,525	23%	1,370	24%	1,605	23%
Awarded 1-19%	3,450	45%	3,465	46%	3,155	47%	2,555	44%	3,410	48%
Awarded 0%	1,590	21%	1,495	20%	1,370	20%	1,185	21%	1,235	17%
Rejections	825	11%	815	11%	715	11%	645	11%	875	12%
All Second/Subsequent Claims	11,035		9,375		8,480		7,365		8,560	
Awarded 20–100%	55	0%	50	1%	45	1%	40	0%	70	1%
Awarded 1-19%	45	0%	60	1%	50	1%	30	1%	65	1%
Awarded 0%	55	1%	55	1%	40	0%	45	1%	35	0%
Increased assessments	3,995	36%	3,400	36%	3,160	37%	2,795	38%	3,470	41%
Maintained assessments	5,980	54%	4,960	53%	4,395	52%	3,830	52%	4,415	52%
Reduced assessments	385	3%	340	4%	320	4%	215	3%	110	1%
Rejections	515	5%	510	5%	475	6%	400	5%	395	5%
All Widow(er)s Claims⁽¹⁾	2,220		2,040		1,930		1,560		1,595	
Awards	1,105	50%	905	44%	825	43%	665	43%	770	48%
Rejections	1,115	50%	1,135	56%	1,105	57%	895	57%	830	52%

Note: (1) Includes restored Widows; Since 2005/06 figures do not include Widow(er)s' reviews.

(2) The discontinuity in this table between 2004/05 and 2005/06 is due to improvements in data processing.

Table 2.2a: Claim outcomes by quarter, Q2-2008 to Q2-2009, numbers

Claim type		Claims cleared during:				
		Q2-2008	Q3-2008	Q4-2008	Q1-2009	Q2-2009
First claims						
Current Invaliding	All	305	190	210	180	145
	Awarded 20-100%	130	75	85	60	40
	Awarded 1-19%	75	55	60	45	35
	Awarded 0%	~	0	~	5	~
	Rejected	95	55	60	65	65
First Claim to Pension	All	1,310	1,515	1,730	1,690	1,340
	Awarded 20-100%	225	310	360	360	275
	Awarded 1-19%	645	790	870	870	670
	Awarded 0%	320	290	315	295	270
	Rejected	120	130	185	160	130
Second/Subsequent claims						
Further Condition	All	785	695	980	890	770
	Awarded 20-100%	10	5	5	5	10
	Awarded 1-19%	10	15	15	15	10
	Awarded 0%	5	5	15	5	10
	Increased	395	340	465	445	335
	Maintained	270	250	370	315	305
	Reduced	~	5	10	10	5
	Rejected	95	75	95	90	95
Conditional List Review	All	335	495	515	415	345
	Awarded 20-100%	5	~	~	5	~
	Awarded 1-19%	~	0	0	0	0
	Awarded 0%	0	0	0	0	0
	Increased	40	50	25	45	40
	Maintained	270	430	460	345	290
	Reduced	15	10	25	15	10
	Rejected	~	~	~	~	~
Deterioration Claim	All	730	845	995	755	685
	Awarded 20-100%	~	~	~	5	~
	Awarded 1-19%	~	0	0	~	0
	Awarded 0%	~	0	0	0	0
	Increased	370	435	480	360	335
	Maintained	350	405	505	385	350
	Reduced	0	~	~	~	~
Rejected	~	~	5	~	~	
Departmental Review	All	30	30	30	35	25
	Awarded 20-100%	~	~	~	5	0
	Awarded 1-19%	~	0	~	~	0
	Awarded 0%	0	0	~	0	0
	Increased	~	5	10	5	~
	Maintained	20	15	5	10	20
	Reduced	~	~	~	~	~
Rejected	~	5	5	5	~	
Widow(er)s Claims⁽¹⁾						
	All	405	420	360	410	350
	Awards	170	200	185	210	155
	Rejections	235	220	175	200	195

Note: (1) Figures include restored Widows; Figures do not include widow(er)s' reviews.

Table 2.3: Successful gratuity & nil percentage awards cleared during financial year, 2004-05 to 2008-09, numbers

	Financial Year:					
	2004-05		2005-06 ⁽¹⁾	2006-07	2007-08	2008-09
All Nil and Gratuity Awards	5,145	 	5,115	4,640	3,840	4,765
Nil Awards	1,645		1,585	1,440	1,255	1,290
01 - 05%	1,265		1,370	1,230	960	1,205
06 - 14%	1,955		1,880	1,725	1,365	1,935
15 - 19%	275		275	245	265	335

Note: (1) The discontinuity in this table between 2004/05 and 2005/06 is due to improvements in data processing.

Table 2.4: First claims to supplementary allowances cleared during quarter, by allowance type and outcome, Q2-2008 to Q2-2009, numbers ⁽¹⁾

Allowance type		First awards made during:				
		Q2-2008	Q3-2008	Q4-2008	Q1-2009	Q2-2009
Allowance for lowered standard of occupation	All	140	155	170	180	155
	Awarded	115	130	140	155	125
	Rejected	25	20	30	25	30
Clothing allowance	All	45	35	30	30	35
	Awarded	20	15	15	15	10
	Rejected	25	20	15	20	25
Constant attendance allowance	All	115	95	115	115	95
	Awarded	65	50	65	50	55
	Rejected	50	45	50	65	45
Exceptionally severe disablement allowance	All	20	15	25	20	20
	Awarded	20	15	25	20	20
	Rejected	0	0	0	0	0
Severe disablement occupational allowance	All	0	0	0	~	~
	Awarded	0	0	0	~	~
	Rejected	0	0	0	0	0
Mobility supplement	All	255	290	320	245	255
	Awarded	160	170	200	155	135
	Rejected	95	120	120	95	115
Unemployability supplement	All	60	70	50	55	55
	Awarded	45	50	40	45	35
	Rejected	10	20	15	10	20
Additional allowance spouse	All	25	20	15	15	20
	Awarded	10	10	10	10	10
	Rejected	10	10	10	10	10
Additional allowance dependant	All	0	0	0	~	~
	Awarded	0	0	0	~	0
	Rejected	0	0	0	0	~
Additional allowance child	All	15	15	20	20	20
	Awarded	15	15	20	15	15
	Rejected	~	~	~	~	5
Child allowance only	All	~	10	~	~	~
	Awarded	~	5	~	~	0
	Rejected	0	~	~	0	~
Widow(er)s child allowances	All	~	0	5	~	~
	Awarded	~	0	5	~	~
	Rejected	~	0	0	0	0
Widow(er)s rent allowance	All	15	15	15	10	10
	Awarded	10	10	15	10	5
	Rejected	~	~	0	0	~
Temporary allowance Widow(er)	All	105	115	130	95	90
	Awarded	105	115	125	95	85
	Rejected	0	~	~	~	~
Funeral expenses	All	515	505	405	515	395
	Awarded	215	250	210	295	225
	Rejected	300	255	195	225	170

Note: (1) Awards processed in the quarter. Entitlement may be backdated to a previous quarter.

Table 2.4a: First claims to supplementary allowances automatically awarded during quarter, by allowance type⁽¹⁾, Q2-2008 to Q2-2009, numbers

Allowance type	First awards made during:				
	Q2-2008	Q3-2008	Q4-2008	Q1-2009	Q2-2009
Age – 80 addition (NI) (Disablement & Widow(er))	20	15	10	15	15
Age – disablement	205	225	225	185	235
Age – Widow(er)s	165	170	150	155	200
Comforts allowance	5	10	5	5	15
Invalidity allowance	~	10	~	5	10

Note: (1) Awards processed in the quarter. Entitlement may be backdated to a previous quarter.

Table 2.5: Appeals cleared to Pensions Appeal Tribunal for consideration during quarter, by appeal type, Q2-2008 to Q2-2009, numbers

Appeals cleared	Appeals cleared during:				
	Q2-2008	Q3-2008	Q4-2008	Q1-2009	Q2-2009
All Appeals Cleared	610	555	745	850	640
Entitlement - Disablement	185	170	215	250	210
Entitlement - Widow(er)s	40	25	70	40	25
Assessment	295	260	340	455	320
Supplementary Allowances	65	75	105	80	65
Temporary Allowances	0	0	0	0	0
Miscellaneous	30	20	15	25	20

Table 2.6: Pensions Appeal Tribunal decisions during quarter by appeal type, Q2-2008 to Q2-2009, numbers and percentages

	Decisions made during:									
	Q2-2008		Q3-2008		Q4-2008		Q1-2009		Q2-2009	
	Number	%	Number	%	Number	%	Number	%	Number	%
Entitlement Appeals	220		205		160		205		190	
Disablement										
All	190		175		135		165		160	
Allowed	75	39%	65	38%	65	47%	65	39%	75	46%
Disallowed	120	61%	110	62%	70	53%	100	61%	85	54%
<u>Widow(er)s</u>										
All	30		30		25		40		25	
Allowed	~	10%	5	17%	~	12%	5	13%	~	11%
Disallowed	25	90%	25	83%	25	88%	35	87%	25	89%
<u>Overall</u>										
Allowed	75	35%	70	35%	65	42%	70	34%	75	41%
Disallowed	145	65%	130	65%	95	58%	135	66%	110	59%
Assessment Appeals	290		280		185		240		290	
Increased	110	37%	110	39%	75	42%	80	33%	120	41%
Upheld	180	63%	170	61%	105	57%	160	67%	175	59%
Reduced	~	0%	~	0%	~	1%	0	0%	0	0%
Allowance Appeals	50		45		50		50		40	
Allowed	10	23%	15	28%	15	27%	15	30%	15	38%
Disallowed	40	77%	35	72%	35	73%	35	70%	25	62%

Glossary of pensions and allowances

Age Allowance

This may be paid to a war disablement pensioner (man or woman) who is aged 65 or over and whose disablement is assessed at 40% or more.

Allowance for Lowered Standard of Occupation (ALSO)

This may be paid if a pensioner's earning capacity is reduced because their pensioned disablement permanently prevents them following their regular occupation. To gain entitlement new claimants must be under age 65, with a service disablement of at least 40% when they make their claim. This allowance plus their basic War Disablement Pension cannot exceed the 100% disablement pension rate.

Child Allowance Only

There is a Child Allowance Only Pension in payment, i.e. no award has been given to War Widow(er)s Pension but her child has been awarded.

Clothing Allowance (CLOT)

This may be paid if the disablement causes exceptional wear and tear on clothing.

Comforts Allowance (COMF)

This may be paid to a severely disabled pensioner who is receiving Constant Attendance Allowance or Unemployability Supplement or both. It is intended to help with the extra expenses associated with severe disablement.

Constant Attendance Allowance (CAA)

This may be paid to a pensioner who needs regular personal attention because of their pensioned disablement and that disablement is assessed at 80% or more. It is payable at one of four rates. The rate varies according to the level of attendance they need.

Disablement Pension (DP)

This is paid at a rate which varies according to the degree of disablement. The degree of disablement is assessed on a percentage basis by the War Pension Agency medical advisors.

Elderly Widow(er)'s Age Allowance

A war widow(er) may receive an additional allowance at age 65 which is increased at age 70 and again at age 80.

Exceptionally Severe Disablement Allowance (ESDA)

This may be paid to a pensioner who is receiving Constant Attendance Allowance at one of the two highest rates, or would be receiving it if they were not in hospital.

Funeral Expenses (FE)

Funeral expenses may be paid if the pensioner died as a result of his service disablement, or died while having treatment for that disablement in hospital, or was entitled to Constant Attendance Allowance, or was at the time of his death 80% or more disabled and receiving Unemployability Supplement.

Invalidity Allowance (IVA)

This may be paid to a pensioner receiving Unemployability Supplement. The rate varies according to the age at which unemployability began.

Modified Over Age Infirm Allowance (MOIA)

Compensation/Allowances (including that paid to children living in the Irish Republic or Overseas) due to infirmity are taken into account when calculating an award of OAIA and adjustments are made if necessary. (See OAIA below)

Modified Unemployability Supplement (MSUP)

The basic conditions of eligibility to UNSUPP for a pensioner living abroad (including the Irish Republic and the Channel Islands) are the same as for the UK, however, if they become eligible for Retirement Pension or other benefit payable out of the public funds of that country then UNSUPP may be adjusted with that benefit, or paid at a nominal rate to allow continued payment of comforts allowance.

Orphan's Pension

This may be payable to a child who has lost both parents.

Over Age Infirm Allowance (OAIA)

Over Age Infirm Allowance for children of deceased pensioners unable to support themselves dates back to the 1914 War. The allowance can be awarded or continued beyond the normal age limits on the grounds of infirmity if the ailment is of a nature which is likely to prevent the person from earning a living either permanently or for a prolonged period and infirmity commenced before age 16. The person is still referred to as a child even though they may be quite elderly.

Rent Allowance (RENT)

A war widow(er) with a child or children may be eligible for a rent allowance.

Severe Disablement Occupational Allowance (SDOA)

This may be paid to a pensioner who is entitled to Constant Attendance Allowance at one of the two highest rates, but who still normally has a gainful occupation.

Temporary Allowance for Widow(er)s (TAW)

This may be paid to a widow(er), irrespective of the cause of their spouse's death, if he/she were awarded Unemployability Supplement or Constant Attendance Allowance or both. The allowance is approximately equal to the disablement pension and allowances paid to their late spouse. It is paid for the first 26 weeks of widowhood.

Treatment Allowance (TA)

This is equivalent to a disablement pension paid at the 100% rate. It may be paid instead of a disablement pension to a pensioner who incurs a loss of earnings as a result of receiving treatment for their pensioned disablement.

Unemployability Supplement (UNSUPP)

This may be paid to a pensioner who is unemployable or virtually unemployable as a result of the war pensioned disablement. To gain entitlement, new claimants must be under age 65, with a pensioned disablement assessed at 60% or more when they make their claim. Additional allowances may be paid for a spouse and a child or children.

War Pensioner's Mobility Supplement (WPMS)

This is intended to help with the mobility costs of a pensioner who is unable to walk, or virtually unable to walk. New claimants must have a service disablement of at least 40%. It is paid to double amputees and to those pensioners who need help getting about because they are both deaf and blind as a result of their pensioned disablement.

War Widow(er)'s Pension (WWP)

The standard rate of pension may be paid if the widow(er) has a dependant child, or is over 40, or is incapable of self-support.

The lower rate is paid to childless widow(er)s under the age of 40. If the spouse was receiving Constant Attendance Allowance, or at the time of his/her death was 80% or more disabled and receiving Unemployability Supplement, a War Widow(er)s Pension is awarded automatically irrespective of the cause of death.

War Widow(er)'s Special Allowance

This is a Supplementary Pension payable to "pre-1973 war widow(er)s" (the widow(er)s of Service personnel who died or left the services before 31st March 1973, and who did not benefit from the improvements made from that date to the MOD's Armed Forces Pension Scheme).

Glossary of terms and conventions

Adult Dependant

Adult relatives, i.e. sister, brother, aunt or uncle etc, for whom the service person was financially responsible.

Appeal

An appeal provides a person with an impartial re-examination of the decision under appeal.

Cleared

Where the work by the Service Personnel and Veterans Agency (SPVA) on a specific task has been fully completed.

Conditional List Review

Conditional List Review cases arise because SPVA Medical Services have previously made an interim assessment for a limited period because the level of disablement was likely to change. A review date is calculated so that disablement can be reassessed before the given period expires.

Current Invaliding

Personnel invalided from the Forces and their case referred direct to the SPVA by Ministry of Defence for War Pensions consideration.

Eligible War Pension Claimant

A claimant is eligible for consideration under the WPS where disablement or death has occurred as a result of Service in HM Forces, prior to 6 April 2005. In addition, awards may also be made where disablement or death has occurred as a result of:

- War-time Service in the Naval Auxiliary Service, or the Mercantile Marine
- Service in the Polish Forces under British command during World War Two

Pensions, allowances or other payments may also be awarded where the disablement or death of a civilian or a member of a civil defence organisation is the direct result of an injury sustained as a result of enemy action in World War Two.

Gratuity

A single payment where war disablement has been accepted, but the disablement has been assessed at less than 20%.

Outcome

The final decision on a claim or action.

PAT

Pensions Appeal Tribunal.

Provision of Treatment

The reimbursement of Treatment/Medical expenses for War Pensioners living abroad.

Received

When a claim, appeal or piece of correspondence has been received by the SPVA.

Registered

When the case or claim is registered on the War Pension Computer System.

Restored Widow(er)

A war widow(er) whose War Widow(er)s Pension was withdrawn on his/her remarriage and who subsequently re-claims the pension on becoming widowed again, legally separated, or divorced.

Unmarried Dependant

Partner who lived with the ex-service person for at least 6 months before his enlistment, was maintained by him and who has borne his child.

War

1914 War	Disabled due to service between 4 August 1914 and 30 September 1921.
Inter War	Disabled due to service between 1 October 1921 and 2 September 1939.
1939 Onwards	Disabled due to service from 3 September 1939 to date.

War Orphan

Child of deceased service person who has no surviving mother or father. Child whose mother was divorced from a service person at the time of death. Child who is not in the care of the surviving parent.

War Parent

Parent of the deceased service person.

Widow(er)

Spouse of ex-service person whose death was whilst in service or related to a disablement due to service from 4 August 1914 to date.

From 8 April 2002 a change in the law governing the War Pensions Scheme means that the provisions for war widowers have been equalised to align with those available to war widows. This change in the war pension law applies from the 8 April 2002 onwards and means that war widowers are now entitled, as appropriate, to the same basic pension, supplementary pension and allowances (e.g. in respect of any dependant children) as war widows. In particular, the means-testing element previously applied to war widowers' claims and pensions has been removed.

Appendix – Changes to the publication

Due to improvements in data processing, some tables within the publication have been updated. As such, figures may be different to those previously published.

The table below documents these changes and the revisions made, where applicable.

Publication in which revision was made	Number of Revised Table	Reason for Revision	Period for which Revisions have been Published
June 2008	1.5	Previously unidentified codes have been re-classified, therefore reducing the number of cases with a 'Not Known' Government Office Region, and increasing the numbers in Wales, Scotland, Northern Ireland, Other UK and creating the 'UK Unknown' Category.	March 2003 – March 2008
September 2008	1.7	More accurate means of calculating the average amounts paid have been implemented, therefore slightly increasing previously published figures for average amounts received by War Widow(er)s.	March 2007 – June 2008

Revisions can be found by going to <http://www.dasa.mod.uk> and clicking on 'National Statistic Publications' then 'War Pension Statistics' and 'Historical'.

Revisions prior to March 2007 are available upon request to dasa-info@dasa-office@mod.uk