



Statistical Notice



WAR PENSIONS QUARTERLY STATISTICS, DECEMBER 2009

11 March 2010

Theme: Other - Defence

Issued by

Defence Analytical Services
and Advice (DASA)
Ministry of Defence
Ensleigh
Bath
BA1 5AB

Enquiries

Press Office:
Tel: 020 721 83253

Statistical Enquiries:

Dr Kate Harrison
DASA Health Information
Head of Branch
Tel: 01225 468456
Fax: 01225 468918
kate.harrison@dasa.mod.uk

Internet

www.dasa.mod.uk

A National Statistics publication

National Statistics are produced to high professional standards. They undergo regular quality assurance reviews to ensure that they meet customer needs. They are produced free from any political interference.

For general enquiries about National Statistics, contact the National Statistics Customer Contact Centre:
Tel: 0845 601 3034
Fax: 01633 652747
Minicom: 01633 812399
E-mail: info@statistics.gov.uk
Internet: www.statistics.gov.uk

INTRODUCTION

This Statistical Notice provides summary statistics on recipients of War Pensions and new claims, awards and appeals made under the War Pension Scheme (WPS).

Pensions, allowances or other payments may be awarded under the WPS to eligible claimants where disablement or death occurs as a result of Service in HM Forces, prior to 6 April 2005.

Figures presented in this Statistical Notice are calculated from data stored on the Service Personnel and Veterans' Agency's War Pensions Computer System.

The Armed Forces and Reserve Forces Compensation Scheme (AFCS) came into force on 6 April 2005 to pay compensation for injury, illness or death caused by Service on or after that date. Summary statistics for the AFCS can be found in a separate quarterly report at www.dasa.mod.uk under 'All Other Publications' and 'Health/Medical Statistics'.

Due to cuts in staff resources and declining numbers under the War Pension Scheme, DASA propose a change in the frequency of the War Pensions Quarterly Statistics, from quarterly reports to bi-annual reports.

It is proposed that one further quarterly publication will be released in June 2010, with figures as at 31 March 2010. From this point on publications will be released on a bi-annual basis reporting on mid-financial year end data (30 September) in December and end of financial year data (31 March) in June. If you have any comments or queries about these changes please go to www.dasa.mod.uk and leave your feedback via the consultation tool.

KEY POINTS

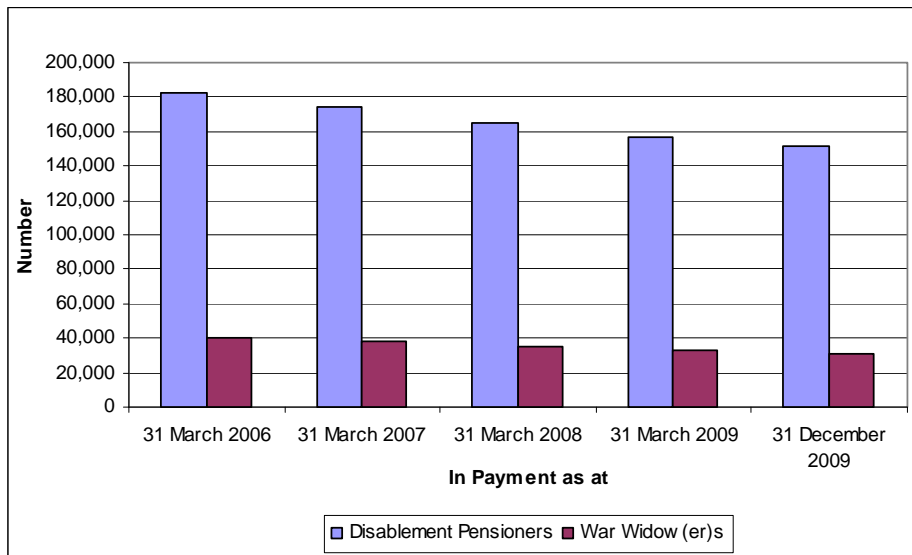
As at 31 December 2009:

- 151,535 War Disablement Pensioners (DPs) were receiving an ongoing pension. This represents a decrease of 7,765 since 31 December 2008.
- 31,340 War Widow(er)s (WWs) were receiving an ongoing pension. This represents a decrease of 2,160 since 31 December 2008.
- Over half of DPs (56%) and around five-sixths of WWs (86%) were aged 70 and over.

- Approximately five out of six (85%) DPs received pensions at the 50% rate or below. The largest group was those at the 20% rate (39% of DPs). Less than 4% received the 100% disablement rate.
- The average weekly amount received by DPs, including pension and supplementary allowances was £74.44. The average weekly amount received by a DP at the 100% disablement rate was £319.55.
- The average weekly amount received by WWs was £215.91. The average weekly WWs pension was £114.74, with the remainder comprising supplementary allowances.

MAIN FINDINGS

Figure 1: War Pensions in payment, 31 March 2006 to 31 December 2009, numbers

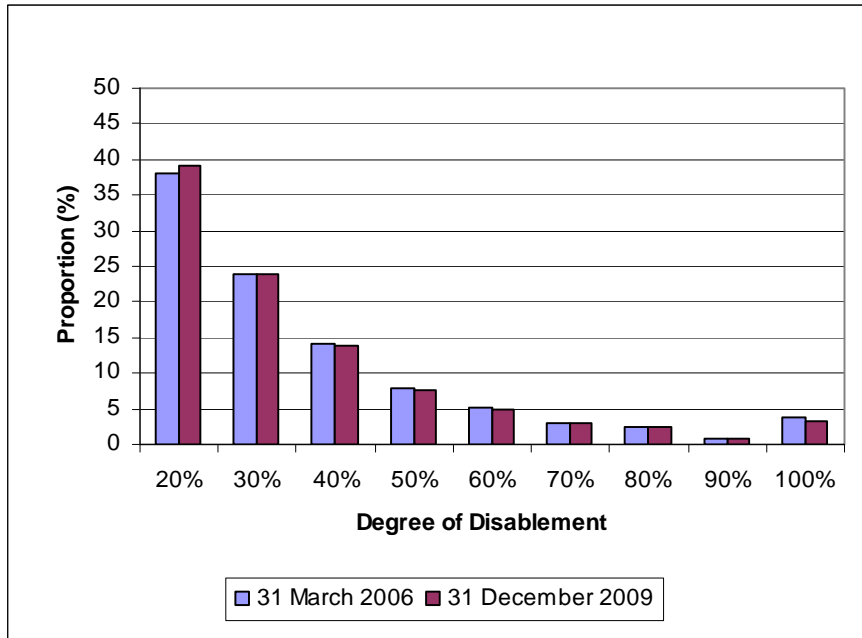


Source Data: Tables 1.1 and 1.2

Figure 1 shows that the number of Disablement Pensioners (DPs) receiving a payment has fallen each year over the past four years, from 182,800 as at 31 March 2006, to 151,535 as at 31 December 2009. Over the same period the number of War Widow(er)s (WWs) fell from 40,125 to 31,340.

This decline is primarily due to the fact that the number of individuals leaving the scheme each year is considerably higher than the number of individuals joining the scheme. The reasons for this are twofold. Firstly, the age profile of current recipients; 56% of DPs and 86% of WWs were aged 70 or over as at 31 December 2009 (see Table 1.6 for age group breakdown). Secondly, compensation claims for injury, illness, or death caused by Service on or after the 6 April 2005 are now processed under the Armed Forces Compensation Scheme (AFCS). As such, the number of claimants joining the WPS is expected to reduce further.

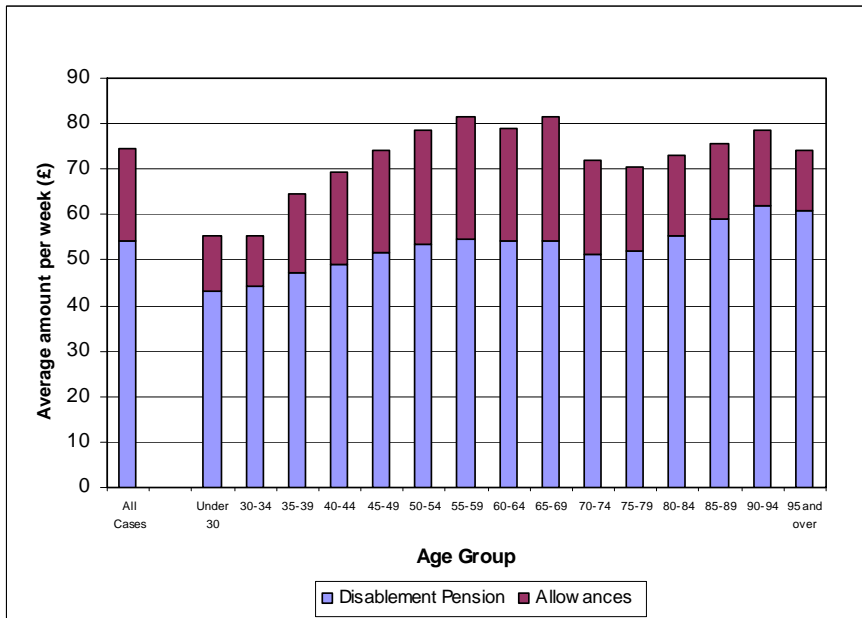
Figure 2: Disablement pensioners at each degree of disablement as at 31 March 2006 and 31 December 2009, percentages



Source Data: Table 1.6

Figure 2 shows that the proportion of DPs at each degree of disablement has remained relatively constant since March 2006, with over 35% receiving pensions for a 20% degree of disablement. As at 31 December 2009, approximately five out of six (85%) DPs received a pension at the 50% degree of disablement or below. Fewer than 4% received a 100% degree of disablement pension.

Figure 3: Disablement pensioners' average weekly pension and allowances as at 31 December 2009, by age group, currency (£)

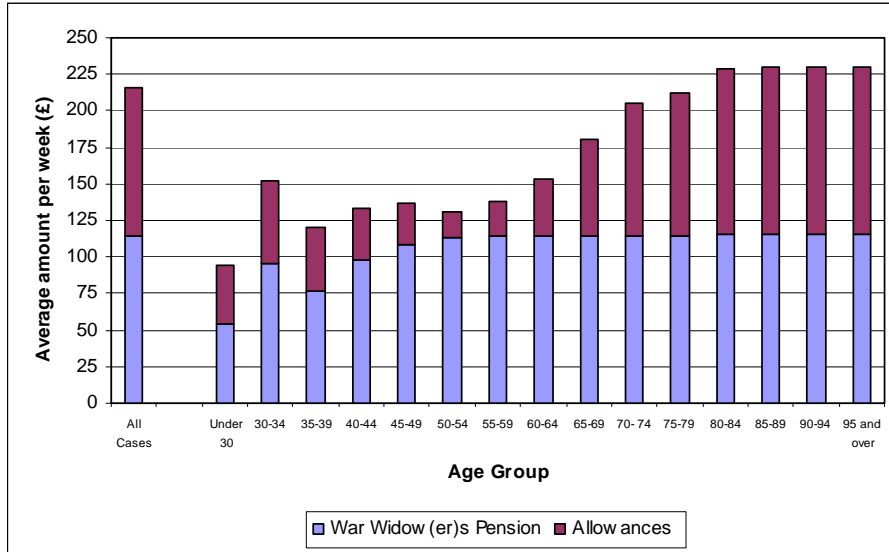


Source Data: Table 1.7

The average weekly amount received by DPs as at 31 December 2009 was £74.44 (**Figure 3**). Of this, £54.16 was from their disablement pension, whilst £20.28 came from supplementary allowances. The average weekly amount received by a DP at the 100% disablement rate was £319.55.

As at 31 December 2009, DPs aged 90-94 received the highest weekly pension of £62.14, whilst DPs aged 65-69 received the highest weekly supplementary allowance of £27.34. Disablement pensions increased with each age group and then leveled off between the age groups 50-54 and 65-69 with an average weekly pension of £54.12. At age group 70-74 there was a drop in weekly pensions before they began to increase again at 80-84. Similarly, supplementary allowances increased with each age group until the age group 55-59, they then began to decrease at age group 70-74 onwards.

Figure 4: War Widow(er)s' average weekly pension and allowances as at 31 December 2009 by age group, currency (£)



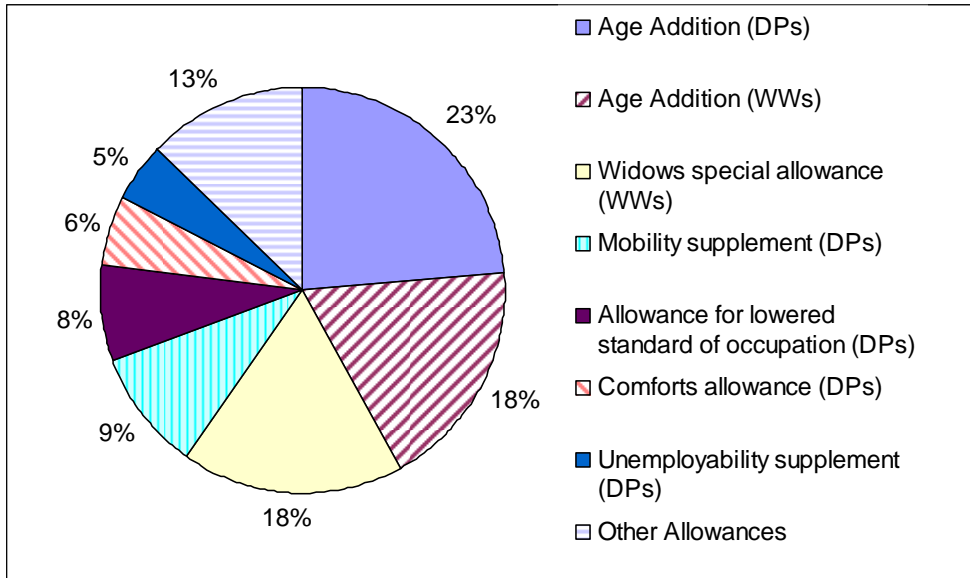
Source Data: Table 1.7

The average weekly amount received by WWs as at 31 December 2009 was £215.91 (**Figure 4**). Of this, £114.74 was from their pension, whilst £101.17 came from supplementary allowances.

As at 31 December 2009 WWs aged 95 and over received the highest average weekly pension amount (£115.83), and WWs aged 85-89 received the highest average weekly supplementary allowances amount (£114.46).

With the exception of higher payments to WWs aged 30-34, WWs pensions increased with each age group and leveled off at age group 50-54 to 95 and over, with an average weekly pension of £114.65. From the age group 30-34, WW average weekly supplementary allowances decrease up until the age group 50-54, before they increase at age group 55-59 onwards.

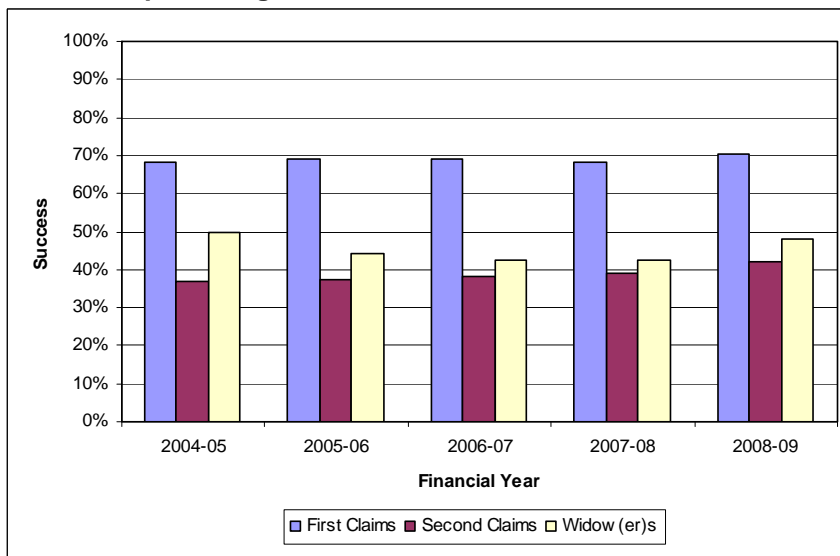
Figure 5: All supplementary allowances in payment as at 31 December 2009, percentages



Source Data: Table 1.8

Figure 5 shows that the most common supplementary allowances in payment as at 31 December 2009 were DP and WW Age Additions, accounting for 41% of all allowances in payment. The next most common allowance was Widow(er)s' Special Allowance, accounting for 18% of all allowances in payment. This is a supplementary pension payable to Widow(er)s of Service personnel who died or left the Services before 31 March 1973, as they would not benefit from the improvements made to the MOD's Armed Forces Pension Scheme after that date.

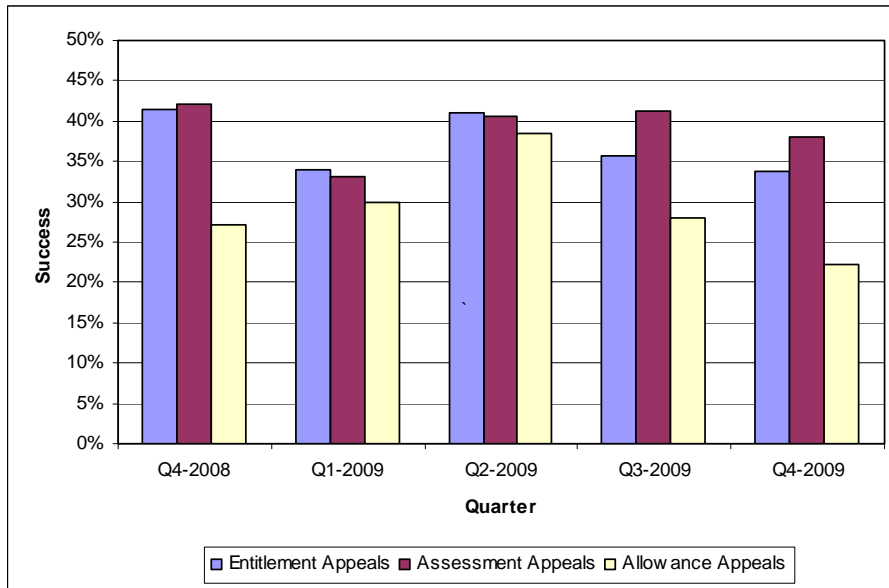
Figure 6: Successful first claims, second claims, and widow(er)s claims by financial year, 2004-05 to 2008-09, percentages



Source Data: Table 2.2

Figure 6 shows that in the financial year 2008-09, 70% of first claims resulted in an ongoing war pension or gratuity, 42% of second claims resulted in an increased entitlement or new award, and 48% of war widow(er)s' claims resulted in an ongoing widow(er)s' pension.

Figure 7: Successful entitlement appeals, assessment appeals and allowance appeals by quarter, Q4-2008 to Q4-2009, percentages



Source Data: Table 2.6

Figure 7 shows that the success of appeals have varied over the last five quarters. During Q4-2009, 34% of entitlement appeals (including WWs entitlement appeals) were successful, 38% of assessment appeals resulted in an increased award and 22% of allowance appeals were successful, compared to 36%, 41%, and 28%, respectively, in Q3-2009.

CONVENTIONS

In line with DASA's Rounding Policy to maintain anonymity of claimants, all figures have been rounded to the nearest five (totals may not add due to rounding). Percentages have been rounded to the nearest 1%.

~	Negligible (fewer than 5)
r	Revised
	Break in series
Q1	1 January to 31 March
Q2	1 April to 30 June
Q3	1 July to 30 September
Q4	1 October to 31 December

Section 1: Recipients of War Pensions

Table 1.1: War Pensions in payment by type of pension, principal scheme and quarter, 31 December 2008 to 31 December 2009, numbers	8
Table 1.2: War Pensions in payment by type of pension, gender and financial year end, 31 March 2005 to 31 March 2009, numbers	9
Table 1.3: War Pensions flows by type of pension and financial year, 2004-05 to 2008-09, numbers.....	9
Table 1.4: Disablement Pensions in payment by degree of disablement as at 31 December 2009, numbers.....	10
Table 1.5: Pensioners by type of pension, principal scheme (DPs) and Government Office Region (GOR) as at 31 December 2009, numbers.....	11
Table 1.6: War Pensions in payment by pension type, percentage disablement and age band as at 31 December 2009, numbers	12
Table 1.7: Average weekly amounts of pension entitlement by type, percentage disablement and age band as at 31 December 2009, currency (£).....	13
Table 1.8: Supplementary allowances in payment by type of allowance and quarter, 30 September 2008 to 31 December 2009, numbers	14
Table 1.8a: Supplementary allowances in payment by type of pension, 31 March 2006 to 31 December 2009, numbers and average weekly amount (£)	14

Table 1.1: War Pensions in payment by type of pension, principal scheme and quarter, 31 December 2008 to 31 December 2009, numbers

	Awards in payment at:				
	31-Dec-08	31-Mar-09	30-Jun-09	30-Sep-09	31-Dec-09
ALL IN PAYMENT	193,640	190,745	188,295	186,115	183,670
Disablement Pensioners	159,300	157,125	155,185	153,500	151,535
in receipt of an ongoing war pension					
1914 war	0	0	0	0	0
Inter-war	40	40	40	35	35
1939 war onwards	156,325	154,240	152,375	150,760	148,890
Civilian	1,585	1,550	1,510	1,480	1,435
Polish	625	595	575	560	540
Mercantile marine	720	700	685	660	635
Not known	~	~	~	0	~
War Widow(er)s	33,500	32,790	32,290	31,810	31,340
War widows pension	33,430	32,715	32,215	31,735	31,265
War widowers pension	70	70	75	75	75
Other Pensioners	840	830	820	805	795
Disablement pensioners (ALSO allowance only)	400	400	395	395	390
War orphans pension	30	30	30	30	25
War parents pension	25	25	20	20	20
Adult dependant pension	10	10	10	10	10
Unmarried dependant pension	~	~	~	~	~
Child allowance only	375	370	365	350	345

Table 1.2: War Pensions in payment by type of pension, gender and financial year end, 31 March 2005 to 31 March 2009, numbers⁽¹⁾

	Awards in payment at:				
	31-Mar-05	31-Mar-06	31-Mar-07	31-Mar-08	31-Mar-09
ALL IN PAYMENT	235,300 	223,850	212,535	201,265	190,745
Men	184,410	175,660	166,910	158,455	150,655
Women	50,890	48,190	45,625	42,810	40,090
Disablement Pensioners	191,750 	182,800	173,850	165,165	157,125
Men	183,675	174,955	166,225	157,780	150,005
Women	8,075	7,845	7,625	7,385	7,120
War Widow(er)s	42,580 	40,125	37,795	35,235	32,790
Men	55	60	65	70	70
Women	42,525	40,065	37,730	35,165	32,715
Other Pensioners	970 	925	890	865	830
Men	680	645	615	605	580
Women	290	280	270	260	255

Note: (1) The discontinuity between the financial years 2004-05 and 2005-06 is due to improvements in data processing.

Table 1.3: War Pensions flows by type of pension and financial year, 2004-05 to 2008-09, numbers⁽¹⁾

	Financial Year:				
	2004-05	2005-06	2006-07	2007-08	2008-09
ALL IN PAYMENT	235,300 	223,850	212,535	201,265	190,745
Total intake in financial year	4,215	3,775	3,295	2,940	3,410
Total outflow in financial year	16,500	15,165	14,610	14,205	13,930
Disablement Pensioners	191,750 	182,800	173,850	165,165	157,125
Intake during financial year	2,955	2,700	2,380	2,170	2,590
Outflow during financial year	12,750	11,670	11,345	10,835	10,640
War Widow(er)s	42,580 	40,125	37,795	35,235	32,790
Intake during financial year	1,210	1,000	895	755	795
Outflow during financial year	3,665	3,460	3,225	3,315	3,245
Other Pensioners	970 	925	890	865	830
Intake during financial year	50	75	20	15	25
Outflow during financial year	85	35	40	55	45

Note: (1) The discontinuity between the financial years 2004-05 and 2005-06 is due to improvements in data processing.

Table 1.4: Disablement Pensions in payment by degree of disablement as at 31 December 2009, numbers

Degree of disablement (Percentage)								
Men and Women	TOTAL	1914 War	Inter War	1939 War onwards	Civilian	Polish	Mercantile Marine	Not Known
ALL	151,535	0	35	148,890	1,435	540	635	~
20	59,465	0	5	58,820	315	140	185	0
30	36,260	0	10	35,625	320	135	170	0
40	21,180	0	5	20,725	250	90	110	0
50	11,710	0	~	11,465	135	50	55	0
60	7,385	0	0	7,240	80	30	30	0
70	4,465	0	~	4,340	75	25	25	~
80	3,655	0	~	3,560	55	25	15	0
90	1,240	0	~	1,190	25	5	10	0
100	5,000	0	~	4,785	155	30	25	0
Not Known ⁽¹⁾	1,180	0	0	1,140	25	10	5	0

Men

ALL	144,620	0	35	142,870	560	520	635	~
20	56,875	0	5	56,435	115	130	185	0
30	34,700	0	10	34,270	115	130	170	0
40	20,195	0	5	19,880	110	85	110	0
50	11,200	0	~	11,045	45	50	55	0
60	7,050	0	0	6,955	35	25	30	0
70	4,235	0	~	4,155	30	25	25	~
80	3,460	0	~	3,395	25	25	15	0
90	1,185	0	~	1,155	10	5	10	0
100	4,705	0	~	4,580	70	30	25	0
Not Known ⁽¹⁾	1,025	0	0	1,005	5	10	5	0

Women

ALL	6,915	0	0	6,020	880	20	0	0
20	2,595	0	0	2,385	200	10	0	0
30	1,560	0	0	1,355	205	~	0	0
40	985	0	0	845	135	~	0	0
50	510	0	0	420	90	0	0	0
60	335	0	0	285	50	~	0	0
70	230	0	0	185	45	~	0	0
80	195	0	0	165	30	0	0	0
90	55	0	0	40	20	0	0	0
100	295	0	0	210	85	~	0	0
Not Known ⁽¹⁾	155	0	0	135	20	~	0	0

Note: (1) 'Not known' consists of those entitled to a disablement pension but with no percentage disability recorded. These include clerical overrides and suspended cases

Table 1.5: Pensioners by type of pension, principal scheme (DPs) and Government Office Region (GOR) as at 31 December 2009, numbers

GOR	Disablement Pensioners										
	All Pensioners	All DPs	1914 War	Inter-war	1939 War onwards	Civilian	Polish	Mercantile Marine	Not known	War Widow(er)s	Other Pensioners ⁽²⁾
ALL	183,670	151,535	0	35	148,890	1,435	540	635	~	31,340	795
North East	11,890	10,560	0	0	10,430	55	10	70	~	1,270	60
North West	20,665	17,445	0	~	17,050	205	50	135	0	3,140	85
Yorkshire and the Humber	13,375	11,000	0	~	10,890	50	35	25	0	2,290	80
East Midlands	11,590	9,640	0	~	9,540	50	35	10	0	1,905	45
West Midlands	10,795	8,705	0	0	8,585	70	40	10	0	2,050	40
East of England	12,850	10,080	0	~	9,890	145	25	20	0	2,735	35
London	6,885	5,085	0	~	4,805	205	65	10	0	1,770	30
South East	23,975	18,890	0	10	18,520	275	30	50	0	4,995	90
South West	23,745	19,675	0	5	19,425	175	35	35	0	3,965	105
Wales	10,400	8,735	0	~	8,635	45	15	40	0	1,615	50
Scotland	17,815	15,295	0	0	15,115	60	35	85	0	2,445	75
N. Ireland	4,450	3,745	0	0	3,730	10	0	5	0	680	25
Other UK ⁽¹⁾	545	440	0	0	435	~	0	~	0	95	~
UK Unknown	785	590	0	0	575	10	~	~	0	190	~
Overseas	13,685	11,445	0	~	11,060	80	165	135	0	2,175	65
Not Known	225	210	0	0	205	~	~	0	0	15	~

Note: (1) 'Other UK' includes Isle of Man and Channel Islands

(2) 'Other Pensioners' includes War Orphans, War Parents, Adult Dependants, Unmarried Dependants, Juvenile Dependants, Child Allowance Only and Allowance for Lowered Standard of Occupation Only Pensioners.

Table 1.6: War Pensions in payment by pension type, percentage disablement (DPs) and age band as at 31 December 2009, numbers

AGE GROUP	All Pensioners	Disablement Pensioners											War Widow(er)s	Other Pensioners ⁽²⁾
		All DPs	20%	30%	40%	50%	60%	70%	80%	90%	100%	Not Known ⁽¹⁾		
ALL	183,670	151,535	59,465	36,260	21,180	11,710	7,385	4,465	3,655	1,240	5,000	1,180	31,340	795
Under 30	1,210	1,085	555	255	95	40	25	15	10	~	20	75	20	105
30 to 34	1,965	1,910	975	430	215	90	60	25	25	~	20	65	45	10
35 to 39	5,970	5,790	2,620	1,410	775	370	215	110	70	15	100	105	120	60
40 to 44	8,315	8,020	3,530	1,935	1,095	525	350	180	125	20	170	90	235	55
45 to 49	10,115	9,735	4,045	2,355	1,310	740	430	250	180	65	280	85	325	60
50 to 54	9,945	9,375	3,665	2,280	1,360	730	480	250	180	55	310	60	500	70
55 to 59	9,070	8,370	3,185	2,005	1,225	675	445	255	210	50	275	45	610	85
60 to 64	11,980	10,920	4,385	2,565	1,485	810	535	350	275	90	365	60	970	90
65 to 69	12,580	11,000	4,565	2,400	1,470	885	545	325	270	90	370	80	1,485	95
70 to 74	19,235	16,935	7,460	4,105	2,105	1,100	680	420	360	105	475	115	2,225	75
75 to 79	19,935	16,545	7,010	4,150	2,150	1,155	640	405	365	120	455	95	3,355	35
80 to 84	22,855	17,195	6,495	4,125	2,480	1,415	885	545	415	155	595	80	5,640	20
85 to 89	33,875	24,625	7,990	5,950	3,855	2,190	1,445	905	790	325	1,045	135	9,230	15
90 to 94	13,930	8,855	2,620	2,025	1,385	865	565	375	330	135	475	75	5,060	15
95 +	2,695	1,180	365	270	175	115	75	50	45	15	55	20	1,510	5

Note: (1) 'Not known' consists of those entitled to a disablement pension but with no percentage disability recorded. These include clerical overrides and suspended cases

(2) 'Other Pensioners' includes War Orphans, War Parents, Adult Dependants, Unmarried Dependants, Juvenile Dependants, Child Allowance Only and Allowance for Lowered Standard of Occupation Only Pensioners.

Table 1.7: Average weekly amounts of pension entitlement by type, percentage disablement (DPs) and age band as at 31 December 2009, currency (£)

(All figures are in £s)

AGE GROUP	Disablement Pension										War Widow(er)s
	All DPs	20%	30%	40%	50%	60%	70%	80%	90%	100%	
PENSION & ALLOWANCES											
All Cases	74.44	31.55	48.91	83.48	108.05	144.41	169.70	216.11	238.15	319.55	215.91
Under 30	55.38	30.46	45.50	77.05	103.41	161.49	158.16	263.55	135.81	381.86	94.08
30 to 34	55.21	30.47	45.25	81.82	107.50	154.07	168.43	184.70	120.03	318.93	152.61
35 to 39	64.63	31.09	46.76	88.03	110.80	152.14	198.46	244.90	284.88	340.93	120.23
40 to 44	69.39	31.52	48.66	86.76	114.29	164.10	194.59	249.52	297.88	354.82	133.32
45 to 49	74.23	31.87	49.34	85.90	118.24	160.92	190.25	239.21	265.93	338.95	136.56
50 to 54	78.69	32.61	50.46	87.40	118.55	162.78	192.70	251.87	277.91	338.57	131.29
55 to 59	81.46	32.62	51.60	86.79	120.62	164.58	198.00	244.62	255.20	344.73	137.94
60 to 64	79.03	32.12	50.66	84.78	114.99	161.54	186.44	237.42	285.62	345.04	152.98
65 to 69	81.50	32.03	50.85	91.25	120.05	165.93	194.43	260.01	283.02	355.56	180.07
70 to 74	71.89	31.56	49.77	88.17	111.45	152.66	188.69	236.85	255.57	346.63	205.09
75 to 79	70.35	31.41	49.30	85.02	108.78	147.95	169.76	223.93	249.92	328.67	212.26
80 to 84	72.91	31.11	48.00	80.45	102.58	130.02	153.15	201.82	224.08	311.53	228.48
85 to 89	75.49	30.96	47.18	76.73	95.48	121.16	141.37	182.29	209.03	288.60	230.04
90 to 94	78.74	31.03	47.10	76.25	94.68	117.93	140.22	168.73	196.80	264.36	230.08
95 +	74.25	31.07	46.60	74.26	93.14	115.55	134.93	156.15	205.30	250.37	229.44
PENSION ONLY											
All Cases	54.16	30.41	45.59	60.57	75.64	90.81	106.16	121.36	136.62	150.82	114.74
Under 30	43.33	30.10	45.48	53.93	72.43	86.98	101.57	117.41	135.81	137.79	53.89
30 to 34	44.31	30.21	45.00	58.71	72.26	86.25	98.13	114.16	70.35	143.10	95.59
35 to 39	47.29	30.12	45.00	58.18	72.10	87.03	102.77	118.54	127.13	141.24	76.94
40 to 44	49.11	30.30	45.23	59.49	73.66	87.73	103.31	118.34	135.97	143.40	97.81
45 to 49	51.66	30.35	45.43	59.91	74.50	89.65	105.85	119.27	131.57	144.77	108.19
50 to 54	53.39	30.40	45.50	60.29	75.07	90.38	105.77	120.08	136.85	148.04	113.44
55 to 59	54.67	30.39	45.60	60.65	75.60	91.01	106.39	121.61	136.63	150.20	113.95
60 to 64	54.24	30.45	45.63	60.72	75.86	91.21	106.08	121.66	136.98	151.29	114.19
65 to 69	54.16	30.46	45.66	60.92	76.04	91.05	106.25	121.85	137.15	152.13	114.02
70 to 74	51.43	30.46	45.69	60.90	76.14	91.40	106.63	121.75	137.12	152.31	114.10
75 to 79	51.89	30.45	45.69	60.93	76.16	91.36	106.58	121.89	137.15	152.15	114.41
80 to 84	55.34	30.45	45.69	60.93	76.16	91.40	106.59	121.91	137.15	152.29	115.18
85 to 89	59.01	30.46	45.69	60.93	76.17	91.41	106.66	121.88	137.15	152.39	115.58
90 to 94	62.14	30.47	45.70	60.95	76.18	91.41	106.64	121.83	137.16	152.39	115.80
95 +	60.71	30.48	45.72	60.92	76.20	91.44	106.68	121.92	137.16	152.35	115.83
ALLOWANCES ONLY (including Widows special allowance)											
All Cases	20.28	1.14	3.32	22.92	32.40	53.60	63.54	94.74	101.53	168.74	101.17
Under 30	12.05	0.37	0.01	23.12	30.98	74.51	56.59	146.13	0.00	244.07	40.19
30 to 34	10.89	0.26	0.25	23.11	35.24	67.82	70.30	70.54	49.68	175.83	57.01
35 to 39	17.34	0.97	1.76	29.86	38.70	65.11	95.69	126.36	157.75	199.70	43.29
40 to 44	20.28	1.22	3.43	27.27	40.62	76.36	91.28	131.18	161.91	211.43	35.52
45 to 49	22.57	1.52	3.91	25.98	43.74	71.27	84.40	119.94	134.36	194.18	28.37
50 to 54	25.29	2.21	4.96	27.11	43.49	72.40	86.94	131.79	141.06	190.53	17.85
55 to 59	26.80	2.23	6.00	26.14	45.03	73.57	91.61	123.01	118.57	194.53	23.99
60 to 64	24.79	1.67	5.02	24.05	39.13	70.33	80.36	115.76	148.65	193.76	38.79
65 to 69	27.34	1.56	5.19	30.32	44.02	74.87	88.18	138.16	145.86	203.43	66.05
70 to 74	20.46	1.10	4.08	27.27	35.32	61.26	82.06	115.09	118.46	194.32	90.99
75 to 79	18.46	0.96	3.61	24.09	32.62	56.59	63.17	102.04	112.77	176.52	97.85
80 to 84	17.58	0.65	2.31	19.52	26.42	38.62	46.56	79.92	86.93	159.25	113.30
85 to 89	16.48	0.50	1.49	15.80	19.31	29.75	34.71	60.41	71.88	136.21	114.46
90 to 94	16.60	0.56	1.40	15.31	18.51	26.51	33.58	46.89	59.64	111.97	114.28
95 +	13.54	0.59	0.88	13.34	16.94	24.11	28.25	34.23	68.14	98.02	113.62

Table 1.8: Supplementary allowances in payment by type of allowance and quarter, 31 December 2008 to 31 December 2009, numbers

Allowance type	Awards in payment at:				
	31-Dec-08	31-Mar-09	30-Jun-09	30-Sep-09	31-Dec-09
ALL ALLOWANCES	161,870	158,815	156,730	154,585	152,560
Age 80 addition (NI) (Disablement & Widow(er))	1,430	1,385	1,345	1,335	1,310
Age addition - Disablement	39,100	38,100	37,385	36,765	36,055
Age addition – Widows	29,915	29,230	28,825	28,425	27,970
Allowance for lowered standard of occupation	11,530	11,555	11,565	11,535	11,525
Clothing allowance	3,890	3,805	3,740	3,685	3,630
Comforts allowance	8,755	8,660	8,575	8,510	8,425
Constant attendance allowance	2,975	2,930	2,900	2,895	2,860
Exceptionally severe disablement allowance	595	595	600	600	600
Severe disablement occupational allowance	5	5	5	5	5
Invalidity allowance	6,595	6,550	6,495	6,455	6,420
Mobility supplement	14,995	14,795	14,690	14,585	14,485
Unemployability supplement	7,800	7,725	7,645	7,580	7,510
Modified unemployability supplement	35	30	30	30	30
Additional allowance spouse	1,635	1,590	1,550	1,505	1,470
Modified allowance for spouse	185	180	175	185	185
Additional allowance dependant	~	~	~	~	~
Additional allowance child	1,200	1,225	1,235	1,120	1,185
Child allowance	815	830	850	730	755
Over age infirm child allowance	300	290	285	285	285
Modified over age infirm child allowance	10	10	10	10	10
Temporary allowance Widow(er)	210	205	160	135	160
Widow(er)s rent allowance	440	385	395	410	410
Widow(er)s special allowance	29,470	28,735	28,255	27,795	27,280

Table 1.8a: Supplementary allowances in payment by type of pension, 31 March 2006 to 31 December 2009, numbers and average weekly amount (£)

	Awards in payment at:				
	31-Mar-06	31-Mar-07	31-Mar-08	31-Mar-09	31-Dec-09
ALL ALLOWANCES	191,145	180,475	169,470	158,815	152,560
Average Weekly Allowances Entitlement (in £s)					
Disablement Pensioners	17.08	18.05	18.93	19.86	20.28
War Widow(er)s	86.66	90.32	92.9	97.04	101.17

Section 2: Number of claims, awards and appeals

Table 2.1: Claims registered during quarter, Q4-2008 to Q4-2009, numbers.....	16
Table 2.1a: Claims registered during quarter by claim type, Q4-2008 to Q4-2009, numbers.....	17
Table 2.2: Claim outcomes by financial year, 2004-05 to 2008-09, numbers and percentages.....	18
Table 2.2a: Claim outcomes by quarter, Q4-2008 to Q4-2009, numbers	19
Table 2.3: Successful gratuity & nil percentage awards cleared during financial year, 2004-05 to 2008-09, numbers.....	20
Table 2.4: First claims to supplementary allowances cleared during quarter, by allowance type and outcome, Q4-2008 to Q4-2009, numbers.....	21
Table 2.4a: First claims to supplementary allowances automatically awarded during quarter, by allowance type, Q4-2008 to Q4-2009, numbers.....	22
Table 2.5: Appeals cleared to Pensions Appeal Tribunal for consideration during quarter, by appeal type, Q4-2008 to Q4-2009, numbers.....	22
Table 2.6: Pensions Appeal Tribunal decisions during quarter by appeal type, Q4-2008 to Q4-2009, numbers and percentages	23

Table 2.1: Claims registered during quarter, Q4-2008 to Q4-2009, numbers

Claim type	Claims registered during:				
	Q4-2008	Q1-2009	Q2-2009	Q3-2009	Q4-2009
All Claims	7,785	8,320	7,950	7,320	6,610
Disablement claims	3,835	3,705	3,850	3,610	3,215
War Widow(er)s claims	365	460	365	310	305
Supplementary allowance claims	1,370	1,405	1,260	1,105	1,140
Supplementary allowance reviews	655	960	825	755	635
Medical expenses	895	1,015	900	885	760
Appeals	665	775	750	665	550

Table 2.1a: Claims registered during quarter by claim type, Q4-2008 to Q4-2009, numbers

Claim type	Claims registered during:				
	Q4-2008	Q1-2009	Q2-2009	Q3-2009	Q4-2009
Disablement claims	3,835	3,705	3,850	3,610	3,215
Current invaliding	175	195	135	135	130
First claim to pension	1,505	1,405	1,430	1,330	1,245
Further condition	795	865	910	850	750
Deterioration	930	835	1,025	935	805
Departmental review	35	35	25	20	25
Conditional list review	400	370	330	340	260
War Widow(er)s claims	365	460	365	310	305
Widow(er)s	350	435	345	280	295
Restored Widow(er)s	10	20	15	25	10
Review Widow(er)s	0	~	~	~	~
Supplementary allowance claims	1,370	1,405	1,260	1,105	1,140
Allowance for lowered standard of occupation	185	170	165	125	115
Clothing allowance	35	40	45	30	35
Constant attendance allowance	120	120	120	105	90
Mobility supplement	275	285	245	240	230
Unemployability supplement	60	60	60	55	65
Additional allowance spouse	25	20	25	20	25
Additional allowance dependant	0	~	0	~	~
Additional allowance child	35	20	35	25	20
Child allowance only	~	~	~	~	~
Widow(er)s child allowances	0	0	0	0	0
Widow(er)s rent allowance	65	40	75	55	70
Temporary allowance Widow(er)	130	95	90	70	115
Funeral expenses	445	550	410	375	375
Supplementary allowance reviews⁽¹⁾	655	960	825	755	635
Allowance for lowered standard of occupation	290	430	380	360	340
Constant attendance allowance	35	35	35	25	20
Mobility supplement	60	60	35	35	40
Unemployability supplement	110	125	120	95	115
Additional allowance spouse	55	240	70	65	40
Additional allowance dependant	0	~	0	~	~
Child allowance ⁽²⁾	110	70	190	175	80
Appeals	665	775	750	665	550
Entitlement - Disablement	195	245	220	215	170
Entitlement - Widow(er)s	35	30	30	40	35
Assessment	330	400	405	310	270
Supplementary Allowances	80	80	65	65	50
Miscellaneous	20	25	25	35	25

Table 2.1a: Claims registered during quarter by claim type, Q4-2008 to Q4-2009, numbers (Continued)

Claim type	Claims registered during:				
	Q4-2008	Q1-2009	Q2-2009	Q3-2009	Q4-2009
Medical expenses⁽³⁾	895	1,015	900	885	760
Appliance	5	~	5	5	~
Chiroprody	~	~	0	~	~
Convalescence	20	25	20	20	25
Dental	20	20	15	20	25
Hearing aid	10	20	10	5	10
Home nursing equipment	10	10	10	~	10
Hospital travel expenses	75	70	55	55	80
House adaptation grant	35	35	30	35	35
Prescription	10	10	10	10	5
Priority treatment	75	100	135	120	80
Private treatment	10	20	10	15	10
Provision of treatment	255	290	225	260	185
Remedial treatment	290	330	310	275	220
Skilled nursing care	5	~	~	~	0
Spectacles	20	30	25	20	20
Treatment allowance (inc. loss of earnings)	45	45	35	35	55

Note: (1) Reviews of allowances which involve rates of pay are traditionally held in the first quarter of the year.

(2) Contains widow(er)s' child allowance and child allowance only reviews.

(3) Excludes NI and Eire.

Table 2.2: Claim outcomes by financial year, 2004-05 to 2008-09, numbers and percentages

Claim Type	Financial Year:									
	2004-05		2005-06 ⁽²⁾		2006-07		2007-08		2008-09	
	Number	%	Number	%	Number	%	Number	%	Number	%
All First Claims	7,590		7,515		6,765		5,750		7,125	
Awarded 20–100%	1,725	23%	1,740	23%	1,525	23%	1,370	24%	1,605	23%
Awarded 1-19%	3,450	45%	3,465	46%	3,155	47%	2,555	44%	3,410	48%
Awarded 0%	1,590	21%	1,495	20%	1,370	20%	1,185	21%	1,235	17%
Rejections	825	11%	815	11%	715	11%	645	11%	875	12%
All Second/Subsequent Claims	11,035		9,375		8,480		7,365		8,560	
Awarded 20–100%	55	<1%	50	<1%	45	<1%	40	<1%	70	<1%
Awarded 1-19%	45	<1%	60	<1%	50	<1%	30	<1%	65	<1%
Awarded 0%	55	<1%	55	<1%	40	<1%	45	<1%	35	<1%
Increased assessments	3,995	36%	3,400	36%	3,160	37%	2,795	38%	3,470	41%
Maintained assessments	5,980	54%	4,960	53%	4,395	52%	3,830	52%	4,415	52%
Reduced assessments	385	3%	340	4%	320	4%	215	3%	110	1%
Rejections	515	5%	510	5%	475	6%	400	5%	395	5%
All Widow(er)s Claims⁽¹⁾	2,220		2,040		1,930		1,560		1,595	
Awards	1,105	50%	905	44%	825	43%	665	43%	770	48%
Rejections	1,115	50%	1,135	56%	1,105	57%	895	57%	830	52%

Note: (1) Includes restored Widows; Since 2005/06 figures do not include Widow(er)s' reviews.

(2) The discontinuity in this table between 2004/05 and 2005/06 is due to improvements in data processing.

Table 2.2a: Claim outcomes by quarter, Q4-2008 to Q4-2009, numbers

Claim type	Claims cleared during:					
	Q4-2008	Q1-2009	Q2-2009	Q3-2009	Q4-2009	
First claims						
Current Invaliding	All	210	180	145	95	110
	Awarded 20-100%	85	60	40	30	35
	Awarded 1-19%	60	45	35	25	25
	Awarded 0%	~	5	~	~	5
	Rejected	60	65	65	40	40
First Claim to Pension	All	1,730	1,690	1,340	1,350	1,345
	Awarded 20-100%	360	360	275	275	250
	Awarded 1-19%	870	870	670	675	725
	Awarded 0%	315	295	270	275	250
	Rejected	185	160	130	125	115
Second/Subsequent claims						
Further Condition	All	980	890	770	780	850
	Awarded 20-100%	5	5	10	10	~
	Awarded 1-19%	15	15	10	10	10
	Awarded 0%	15	5	10	15	5
	Increased	465	445	335	375	430
	Maintained	370	315	305	285	300
	Reduced	10	10	5	5	5
	Rejected	95	90	95	75	90
Conditional List Review	All	515	415	345	300	315
	Awarded 20-100%	~	5	~	~	~
	Awarded 1-19%	0	0	0	0	~
	Awarded 0%	0	0	0	0	0
	Increased	25	45	40	25	30
	Maintained	460	345	290	265	270
	Reduced	25	15	10	5	10
	Rejected	~	~	~	0	~
Deterioration Claim	All	995	755	685	690	740
	Awarded 20-100%	~	5	~	5	~
	Awarded 1-19%	0	~	0	~	0
	Awarded 0%	0	0	0	0	0
	Increased	480	360	335	350	370
	Maintained	505	385	350	330	360
	Reduced	~	~	~	0	~
	Rejected	5	~	~	~	5
Departmental Review	All	30	35	25	15	25
	Awarded 20-100%	~	5	0	0	~
	Awarded 1-19%	~	~	0	0	~
	Awarded 0%	~	0	0	0	0
	Increased	10	5	~	~	10
	Maintained	5	10	20	10	10
	Reduced	~	~	~	~	~
	Rejected	5	5	~	~	~
Widow(er)s Claims⁽¹⁾						
	All	360	410	350	340	285
	Awards	185	210	155	155	165
	Rejections	175	200	195	185	120

Note: (1) Figures include restored Widows; Figures do not include widow(er)s' reviews.

Table 2.3: Successful gratuity & nil percentage awards cleared during financial year, 2004-05 to 2008-09, numbers

	Financial Year:					
	2004-05		2005-06 ⁽¹⁾	2006-07	2007-08	2008-09
All Nil and Gratuity Awards	5,145	 	5,115	4,640	3,840	4,765
Nil Awards	1,645		1,585	1,440	1,255	1,290
01 - 05%	1,265		1,370	1,230	960	1,205
06 - 14%	1,955		1,880	1,725	1,365	1,935
15 - 19%	275		275	245	265	335

Note: (1) The discontinuity in this table between 2004/05 and 2005/06 is due to improvements in data processing.

Table 2.4: First claims to supplementary allowances cleared during quarter, by allowance type and outcome, Q4-2008 to Q4-2009, numbers ⁽¹⁾

Allowance type		First awards made during:				
		Q4-2008	Q1-2009	Q2-2009	Q3-2009	Q4-2009
Allowance for lowered standard of occupation	All	170	180	155	140	95
	Awarded	140	155	125	100	65
	Rejected	30	25	30	40	30
Clothing allowance	All	30	30	35	35	30
	Awarded	15	15	10	20	15
	Rejected	15	20	25	20	15
Constant attendance allowance	All	115	115	95	115	90
	Awarded	65	50	55	70	55
	Rejected	50	65	45	50	35
Exceptionally severe disablement allowance	All	25	20	20	20	15
	Awarded	25	20	20	20	15
	Rejected	0	0	0	0	0
Severe disablement occupational allowance	All	0	~	~	0	0
	Awarded	0	~	~	0	0
	Rejected	0	0	0	0	0
Mobility supplement	All	320	245	255	240	215
	Awarded	200	155	135	145	120
	Rejected	120	95	115	95	95
Unemployability supplement	All	50	55	55	50	45
	Awarded	40	45	35	40	35
	Rejected	15	10	20	10	10
Additional allowance spouse	All	15	15	20	20	20
	Awarded	10	10	10	5	10
	Rejected	10	10	10	15	10
Additional allowance dependant	All	0	~	~	~	~
	Awarded	0	~	0	~	0
	Rejected	0	0	~	0	~
Additional allowance child	All	20	20	20	25	15
	Awarded	20	15	15	25	10
	Rejected	~	~	5	~	5
Child allowance only	All	~	~	~	~	~
	Awarded	~	~	0	~	~
	Rejected	~	0	~	0	~
Widow(er)s child allowances	All	5	~	~	~	~
	Awarded	5	~	~	~	~
	Rejected	0	0	0	0	0
Widow(er)s rent allowance	All	15	10	10	15	5
	Awarded	15	10	5	15	5
	Rejected	0	0	~	0	0
Temporary allowance Widow(er)	All	130	95	90	70	110
	Awarded	125	95	85	70	110
	Rejected	~	~	~	~	~
Funeral expenses	All	405	515	395	380	345
	Awarded	210	295	225	180	190
	Rejected	195	225	170	205	155

Note: (1) Awards processed in the quarter. Entitlement may be backdated to a previous quarter.

Table 2.4a: First claims to supplementary allowances automatically awarded during quarter, by allowance type⁽¹⁾, Q4-2008 to Q4-2009, numbers

Allowance type	First awards made during:				
	Q4-2008	Q1-2009	Q2-2009	Q3-2009	Q4-2009
Age – 80 addition (NI) (Disablement & Widow(er))	10	15	15	15	15
Age – disablement	225	185	235	215	210
Age – Widow(er)s	150	155	200	155	145
Comforts allowance	5	5	15	10	10
Invalidity allowance	~	5	10	10	10

Note: (1) Awards processed in the quarter. Entitlement may be backdated to a previous quarter.

Table 2.5: Appeals cleared to Pensions Appeal Tribunal for consideration during quarter, by appeal type, Q4-2008 to Q4-2009, numbers

Appeals cleared	Appeals cleared during:				
	Q4-2008	Q1-2009	Q2-2009	Q3-2009	Q4-2009
All Appeals Cleared	745	850	640	835	695
Entitlement - Disablement	215	250	210	275	220
Entitlement - Widow(er)s	70	40	25	30	40
Assessment	340	455	320	440	325
Supplementary Allowances	105	80	65	55	75
Temporary Allowances	0	0	0	0	0
Miscellaneous	15	25	20	30	35

Table 2.6: Pensions Appeal Tribunal decisions during quarter by appeal type, Q4-2008 to Q4-2009, numbers and percentages

	Decisions made during:									
	Q4-2008		Q1-2009		Q2-2009		Q3-2009		Q4-2009	
	Number	%	Number	%	Number	%		%		%
Entitlement Appeals	160		205		190		190		200	
<u>Disablement</u>										
All	135		165		160		165		170	
Allowed	65	47%	65	39%	75	46%	65	40%	60	35%
Disallowed	70	53%	100	61%	85	54%	100	60%	110	65%
<u>Widow(er)s</u>										
All	25		40		25		25		25	
Allowed	~	12%	5	13%	~	11%	~	8%	5	22%
Disallowed	25	88%	35	87%	25	89%	20	92%	20	78%
<u>Overall</u>										
Allowed	65	42%	70	34%	75	41%	65	36%	65	34%
Disallowed	95	58%	135	66%	110	59%	120	64%	130	66%
Assessment Appeals	185		240		290		270		265	
Increased	75	42%	80	33%	120	41%	110	41%	100	38%
Upheld	105	57%	160	67%	175	59%	160	58%	160	62%
Reduced	~	<1%	0	0%	0	0%	~	<1%	~	<1%
Allowance Appeals	50		50		40		50		25	
Allowed	15	27%	15	30%	15	38%	15	28%	5	22%
Disallowed	35	73%	35	70%	25	62%	35	72%	20	78%

Glossary of pensions and allowances

Age Allowance

This may be paid to a war disablement pensioner (man or woman) who is aged 65 or over and whose disablement is assessed at 40% or more.

Allowance for Lowered Standard of Occupation (ALSO)

This may be paid if a pensioner's earning capacity is reduced because their pensioned disablement permanently prevents them following their regular occupation. To gain entitlement new claimants must be under age 65, with a service disablement of at least 40% when they make their claim. This allowance plus their basic War Disablement Pension cannot exceed the 100% disablement pension rate.

Child Allowance Only

There is a Child Allowance Only Pension in payment, i.e. no award has been given to War Widow(er)s Pension but her child has been awarded.

Clothing Allowance (CLOT)

This may be paid if the disablement causes exceptional wear and tear on clothing.

Comforts Allowance (COMF)

This may be paid to a severely disabled pensioner who is receiving Constant Attendance Allowance or Unemployability Supplement or both. It is intended to help with the extra expenses associated with severe disablement.

Constant Attendance Allowance (CAA)

This may be paid to a pensioner who needs regular personal attention because of their pensioned disablement and that disablement is assessed at 80% or more. It is payable at one of four rates. The rate varies according to the level of attendance they need.

Disablement Pension (DP)

This is paid at a rate which varies according to the degree of disablement. The degree of disablement is assessed on a percentage basis by the War Pension Agency medical advisors.

Elderly Widow(er)'s Age Allowance

A war widow(er) may receive an additional allowance at age 65 which is increased at age 70 and again at age 80.

Exceptionally Severe Disablement Allowance (ESDA)

This may be paid to a pensioner who is receiving Constant Attendance Allowance at one of the two highest rates, or would be receiving it if they were not in hospital.

Funeral Expenses (FE)

Funeral expenses may be paid if the pensioner died as a result of his service disablement, or died while having treatment for that disablement in hospital, or was entitled to Constant Attendance Allowance, or was at the time of his death 80% or more disabled and receiving Unemployability Supplement.

Invalidity Allowance (IVA)

This may be paid to a pensioner receiving Unemployability Supplement. The rate varies according to the age at which unemployability began.

Modified Over Age Infirm Allowance (MOIA)

Compensation/Allowances (including that paid to children living in the Irish Republic or Overseas) due to infirmity are taken into account when calculating an award of OAIA and adjustments are made if necessary. (See OAIA below)

Modified Unemployability Supplement (MSUP)

The basic conditions of eligibility to UNSUPP for a pensioner living abroad (including the Irish Republic and the Channel Islands) are the same as for the UK, however, if they become eligible for Retirement Pension or other benefit payable out of the public funds of that country then UNSUPP may be adjusted with that benefit, or paid at a nominal rate to allow continued payment of comforts allowance.

Orphan's Pension

This may be payable to a child who has lost both parents.

Over Age Infirm Allowance (OAIA)

Over Age Infirm Allowance for children of deceased pensioners unable to support themselves dates back to the 1914 War. The allowance can be awarded or continued beyond the normal age limits on the grounds of infirmity if the ailment is of a nature which is likely to prevent the person from earning a living either permanently or for a prolonged period and infirmity commenced before age 16. The person is still referred to as a child even though they may be quite elderly.

Rent Allowance (RENT)

A war widow(er) with a child or children may be eligible for a rent allowance.

Severe Disablement Occupational Allowance (SDOA)

This may be paid to a pensioner who is entitled to Constant Attendance Allowance at one of the two highest rates, but who still normally has a gainful occupation.

Temporary Allowance for Widow(er)s (TAW)

This may be paid to a widow(er), irrespective of the cause of their spouse's death, if he/she were awarded Unemployability Supplement or Constant Attendance Allowance or both. The allowance is approximately equal to the disablement pension and allowances paid to their late spouse. It is paid for the first 26 weeks of widowhood.

Treatment Allowance (TA)

This is equivalent to a disablement pension paid at the 100% rate. It may be paid instead of a disablement pension to a pensioner who incurs a loss of earnings as a result of receiving treatment for their pensioned disablement.

Unemployability Supplement (UNSUPP)

This may be paid to a pensioner who is unemployable or virtually unemployable as a result of the war pensioned disablement. To gain entitlement, new claimants must be under age 65, with a pensioned disablement assessed at 60% or more when they make their claim. Additional allowances may be paid for a spouse and a child or children.

War Pensioner's Mobility Supplement (WPMS)

This is intended to help with the mobility costs of a pensioner who is unable to walk, or virtually unable to walk. New claimants must have a service disablement of at least 40%. It is paid to double amputees and to those pensioners who need help getting about because they are both deaf and blind as a result of their pensioned disablement.

War Widow(er)'s Pension (WWP)

The standard rate of pension may be paid if the widow(er) has a dependant child, or is over 40, or is incapable of self-support.

The lower rate is paid to childless widow(er)s under the age of 40. If the spouse was receiving Constant Attendance Allowance, or at the time of his/her death was 80% or more disabled and receiving Unemployability Supplement, a War Widow(er)s Pension is awarded automatically irrespective of the cause of death.

War Widow(er)'s Special Allowance

This is a Supplementary Pension payable to "pre-1973 war widow(er)s" (the widow(er)s of Service personnel who died or left the services before 31st March 1973, and who did not benefit from the improvements made from that date to the MOD's Armed Forces Pension Scheme).

Glossary of terms and conventions

Adult Dependant

Adult relatives, i.e. sister, brother, aunt or uncle etc, for whom the service person was financially responsible.

Appeal

An appeal provides a person with an impartial re-examination of the decision under appeal.

Cleared

Where the work by the Service Personnel and Veterans Agency (SPVA) on a specific task has been fully completed.

Conditional List Review

Conditional List Review cases arise because SPVA Medical Services have previously made an interim assessment for a limited period because the level of disablement was likely to change. A review date is calculated so that disablement can be reassessed before the given period expires.

Current Invaliding

Personnel invalided from the Forces and their case referred direct to the SPVA by Ministry of Defence for War Pensions consideration.

Eligible War Pension Claimant

A claimant is eligible for consideration under the WPS where disablement or death has occurred as a result of Service in HM Forces, prior to 6 April 2005. In addition, awards may also be made where disablement or death has occurred as a result of:

- War-time Service in the Naval Auxiliary Service, or the Mercantile Marine
- Service in the Polish Forces under British command during World War Two

Pensions, allowances or other payments may also be awarded where the disablement or death of a civilian or a member of a civil defence organisation is the direct result of an injury sustained as a result of enemy action in World War Two.

Gratuity

A single payment where war disablement has been accepted, but the disablement has been assessed at less than 20%.

Outcome

The final decision on a claim or action.

PAT

Pensions Appeal Tribunal.

Provision of Treatment

The reimbursement of Treatment/Medical expenses for War Pensioners living abroad.

Received

When a claim, appeal or piece of correspondence has been received by the SPVA.

Registered

When the case or claim is registered on the War Pension Computer System.

Restored Widow(er)

A war widow(er) whose War Widow(er)s Pension was withdrawn on his/her remarriage and who subsequently re-claims the pension on becoming widowed again, legally separated, or divorced.

Unmarried Dependant

Partner who lived with the ex-service person for at least 6 months before his enlistment, was maintained by him and who has borne his child.

War

1914 War	Disabled due to service between 4 August 1914 and 30 September 1921.
Inter War	Disabled due to service between 1 October 1921 and 2 September 1939.
1939 Onwards	Disabled due to service from 3 September 1939 to date.

War Orphan

Child of deceased service person who has no surviving mother or father. Child whose mother was divorced from a service person at the time of death. Child who is not in the care of the surviving parent.

War Parent

Parent of the deceased service person.

Widow(er)

Spouse of ex-service person whose death was whilst in service or related to a disablement due to service from 4 August 1914 to date.

From 8 April 2002 a change in the law governing the War Pensions Scheme means that the provisions for war widowers have been equalised to align with those available to war widows. This change in the war pension law applies from the 8 April 2002 onwards and means that war widowers are now entitled, as appropriate, to the same basic pension, supplementary pension and allowances (e.g. in respect of any dependant children) as war widows. In particular, the means-testing element previously applied to war widowers' claims and pensions has been removed.

Appendix – Changes to the publication

Due to improvements in data processing, some tables within the publication have been updated. As such, figures may be different to those previously published.

The table below documents these changes and the revisions made, where applicable.

Publication in which revision was made	Number of Revised Table	Reason for Revision	Period for which Revisions have been Published
June 2008	1.5	Previously unidentified codes have been re-classified, therefore reducing the number of cases with a 'Not Known' Government Office Region, and increasing the numbers in Wales, Scotland, Northern Ireland, Other UK and creating the 'UK Unknown' Category.	March 2003 – March 2008
September 2008	1.7	More accurate means of calculating the average amounts paid have been implemented, therefore slightly increasing previously published figures for average amounts received by War Widow(er)s.	March 2007 – June 2008

Revisions can be found by going to <http://www.dasa.mod.uk> and clicking on 'National Statistic Publications' then 'War Pension Statistics' and 'Historical'.

Revisions prior to March 2007 are available upon request to dasa-info@dasa-office@mod.uk