



WAR PENSIONS QUARTERLY STATISTICS, DECEMBER 2008

12 March 2009

Theme: Other - Defence

Issued by

Defence Analytical Services
and Advice (DASA)
Ministry of Defence
Ensligh
Bath
BA1 5AB

Enquiries

Press Office:
Tel: 020 721 83253
Statistical Enquiries:
Dr Kate Harrison
Head of Health Information
Tel: 01225 468456
Fax: 01225 468918
kate.harrison@dasa.mod.uk

Internet

[www.dasa.mod.uk/
natstats/natstatsindex.html](http://www.dasa.mod.uk/natstats/natstatsindex.html)

A National Statistics publication

National Statistics are produced to high professional standards. They undergo regular quality assurance reviews to ensure that they meet customer needs. They are produced free from any political interference.

For general enquiries about National Statistics, contact the National Statistics Customer Contact Centre:
Tel: 0845 601 3034
Fax: 01633 652747
Minicom: 01633 812399
E-mail: info@statistics.gov.uk
Internet: www.statistics.gov.uk

INTRODUCTION

This Statistical Notice provides summary statistics on recipients of War Pensions and new claims, awards and appeals made under the War Pension Scheme (WPS).

Pensions, allowances or other payments may be awarded under the WPS to eligible claimants where disablement or death occurs as a result of Service in HM Forces, prior to 6 April 2005.

Figures presented in this Statistical Notice are calculated from data stored on the Service Personnel and Veterans' Agency's War Pensions Computer System

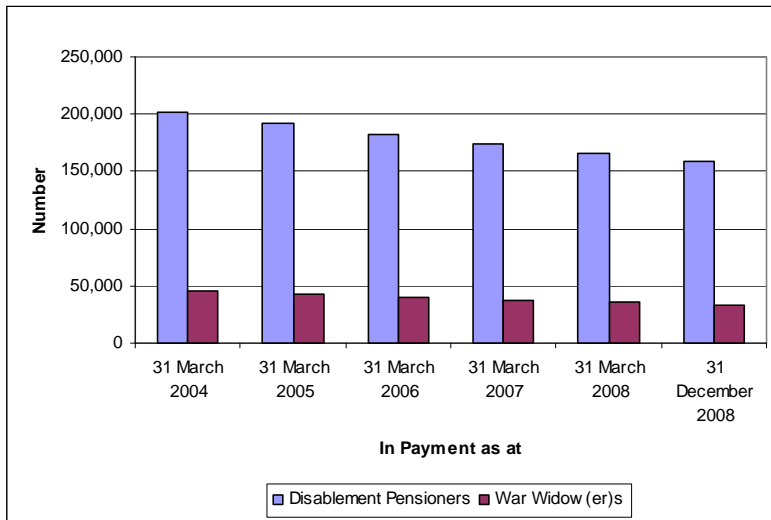
The Armed Forces and Reserve Forces Compensation Scheme (AFCS) came into force on 6 April 2005 to pay compensation for injury, illness or death caused by Service on or after that date. Summary statistics for the AFCS can be found in a separate quarterly report.

KEY POINTS

- To the nearest thousand, as at 31 December 2008, 159,000 War Disablement Pensioners (DPs) were receiving an ongoing pension. This represents a decrease of around 6,000 since 31 March 2008.
- As at 31 December 2008, 34,500 War Widow(er)s (WWs) were receiving an ongoing pension. This represents a decrease of around 1,700 since 31 March 2008.
- Over half of DPs (52%) and around four-fifths of WWs (79%) were aged 75 and over as at 31 December 2008.
- Approximately 5 out of 6 DPs received pensions at the 50% rate or below. The largest group was those at the 20% rate. Fewer than 4% received the 100% disablement rate.
- The average weekly amount received by DPs, including pension and supplementary allowances was £71.62. The average weekly amount received by a DP at the 100% disablement rate was £302.71.
- The average weekly amount received by WWs was £206.37. The average weekly WWs pension was £109.11, with the remainder comprising supplementary allowances.

MAIN FINDINGS

Figure 1: War Pensions in payment, 31 March 2004 to 31 December 2008

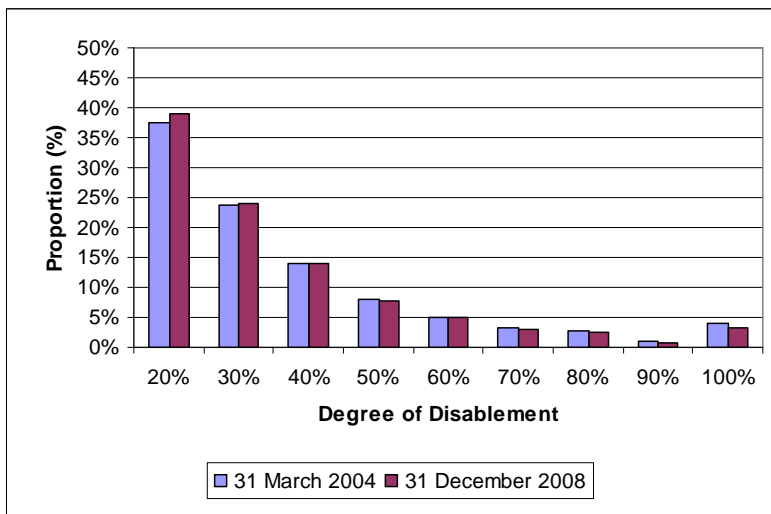


Source Data: Tables 1.1 and 1.2

Figure 1 shows that the number of Disablement Pensioners (DPs) receiving a payment has fallen each year over the past four years, from 202,000 as at 31 March 2004, to 165,000 as at 31 March 2008. As at 31 December 2008 there was a further fall to 159,000 Disablement Pensioners (DPs). The number of War Widow(er)s (WWs) fell from 45,000 to 35,000 over the period 31 March 2004 to 31 March 2008, and again to 34,000 as at 31 December 2008.

The numbers of recipients leaving the scheme each year are considerably higher than the numbers joining. This is primarily due to the ageing profile of current recipients (52% of DPs and 79% of WWs were aged 75 or over as at 31 December 2008 – see Table 1.6 for age group breakdown). In addition, compensation claims for injury, illness or death caused by Service on or after the 6 April 2005 are now processed under the Armed Forces Compensation Scheme (AFCS). Therefore the numbers of claimants joining the scheme are expected to reduce further.

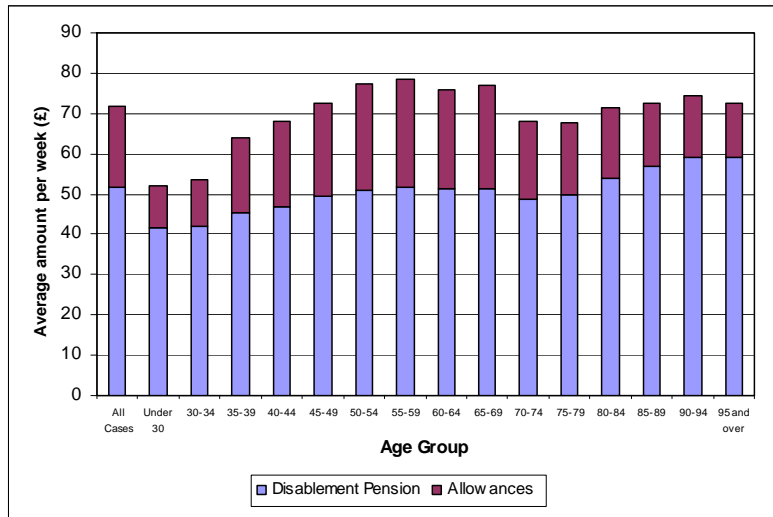
Figure 2: Proportion (%) of disablement pensioners at each degree of disablement as at 31 March 2004 and 31 December 2008



Source Data: Table 1.6

Figure 2 shows that the proportion of DPs at each degree of disablement has remained relatively constant since March 2004, with over 35% receiving pensions for a 20% degree of disablement. As at 31 December 2008, approximately five out of six (85%) DPs received a pension at the 50% degree of disablement or below. Fewer than 4% received a 100% degree of disablement pension.

Figure 3: Disablement pensioners' average weekly pension and allowances (£) as at 31 December 2008, by age group

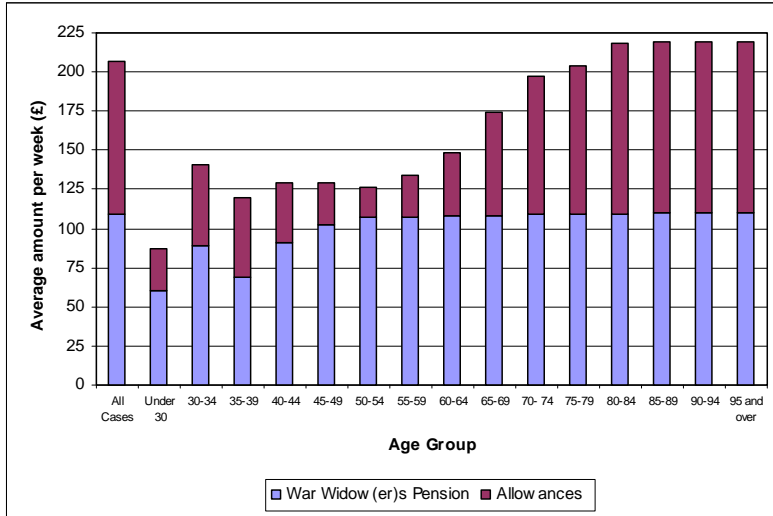


Source Data: Table 1.7

Figure 3 shows that the average weekly amount received by DPs as at 31 December 2008 was £71.62. Of this, £51.81 was from their disabling pension, whilst £19.81 came from supplementary allowances. The average weekly amount received by a DP at the 100% disablement rate was £302.71.

As at 31 December 2008 DPs aged 55-59 received both the highest pension and supplementary allowance amounts, totaling an average weekly payment of £78.43. Disabling pensions increase with each age group, with the exception of 60-64, 65-69 and 70-74. Supplementary allowances increase with each age group until 60-64, and decrease with each age group from 65-69 onwards.

Figure 4: War Widow(er)s' average weekly pension and allowances (£) as at 31 December 2008 by age group



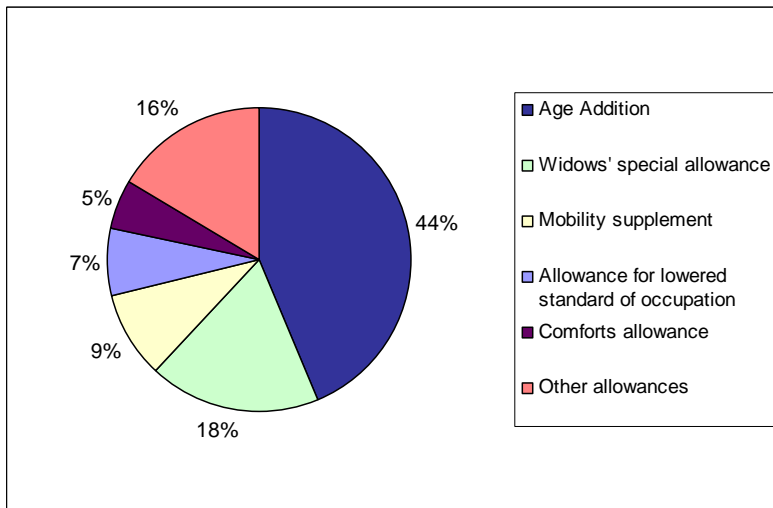
Source Data: Table 1.7

Figure 4 shows that the average weekly amount received by WWs as at 31 December 2008 was £206.37. Of this, £109.11 was from their pension, whilst £97.26 came from supplementary allowances.

As at 31 December 2008 WWs aged 95 and over received the highest average weekly pension amount (£110.36), and WWs aged 90-94 received the highest average weekly supplementary allowances amount (£108.94)

With the exception of slightly higher payments to WWs aged 30-34, WWs pensions increase overall with each age group. For WWs aged 50 and over any increase in payments are only by a few pence. From the age group 30-34, WW supplementary allowances decrease until the age group 50-54, when they increase until the age group 85-89.

Figure 5: Supplementary allowances in payment as at 31 December 2008

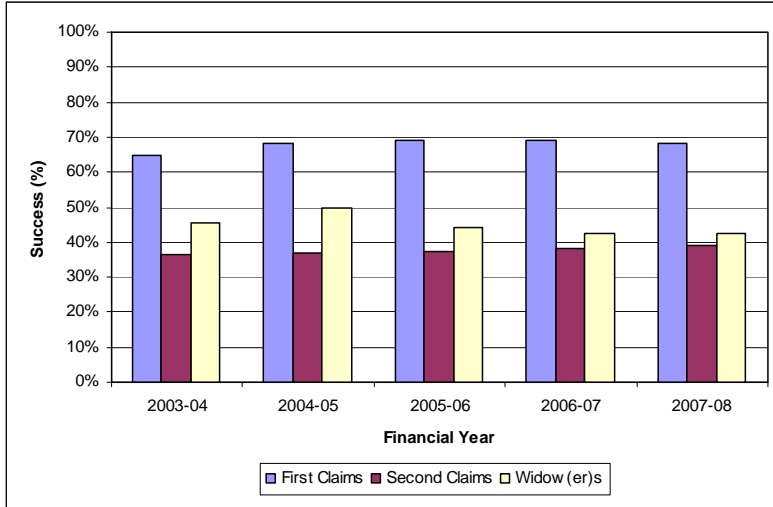


Source Data: Table 1.8

Figure 5 shows that the most common supplementary allowance in payment as at 31 December 2008 was Age Addition, accounting for 44% of all allowances in payment.

The next most common allowance was Widow(er)s' Special Allowance, accounting for 18% of all allowances in payment. Different to previous publications Unemployability Supplement (Unsupp) has been included in the 'Other Allowances' category in **Figure 5** - as at 31 December 2008 it accounts for only 0.2% of supplementary allowances.

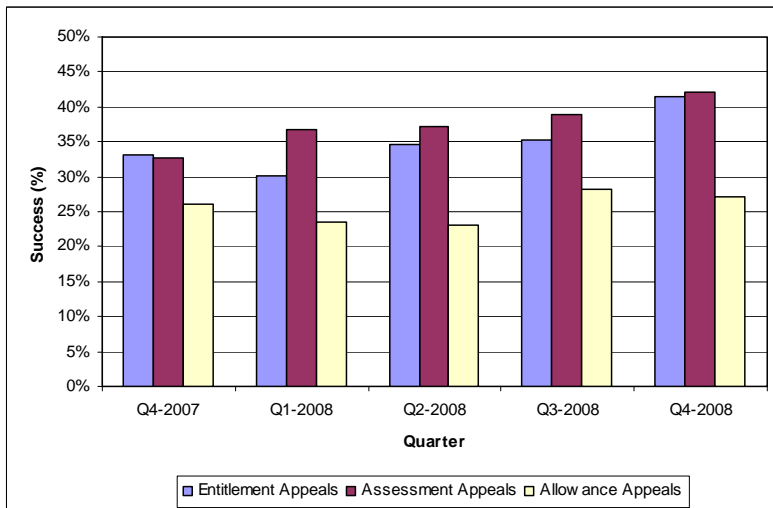
Figure 6: Successful first claims, second claims, and widow(er)s claims (%) by financial year, 2003-04 to 2007-08



Source Data: Table 2.2

Figure 6 shows that in the financial year 2007-08, 68% of first claims resulted in an ongoing war pension or gratuity, 43% of war widow(er)s' claims resulted in an ongoing widow(er)s' pension, and 39% of second claims resulted in an increased entitlement or new award.

Figure 7: Successful entitlement appeals, assessment appeals and allowance appeals (%) by quarter, Q4-2007 to Q4-2008



Source Data: Table 2.6

Figure 7 shows that successful appeals have varied over the last five quarters. During Q4-2008, 42% of entitlement appeals (including WWs entitlement appeals) were successful, 42% of assessment appeals resulted in an increased award and 27% of allowance appeals were successful, compared to 33%, 33%, and 26%, respectively, in Q4-2007.

CONVENTIONS

In line with DASA's Disclosure and Confidentiality Policy to maintain anonymity of claimants, all figures have been rounded to the nearest five (totals may not add due to rounding). Percentages have been rounded to the nearest 1%.

-	Nil
~	Negligible (fewer than 5)
<i>r</i>	Revised
	Break in series
Q1	1 January to 31 March
Q2	1 April to 30 June
Q3	1 July to 30 September
Q4	1 October to 31 December

Section 1: Recipients of War Pensions

Table 1.1: War Pensions in payment by type of pension, principal scheme and quarter, 31 December 2007 to 31 December 2008.	8
Table 1.2: War Pensions in payment by type of pension, gender, and financial year end, 31 March 2004 to 31 March 2008.	9
Table 1.3: War Pensions flows by type of pension, and financial year, 2003-04 to 2007-08.	9
Table 1.4: Disablement Pensions in payment by degree of disablement as at 31 December 2008.	10
Table 1.5: Pensioners by type of pension, principal scheme (DPs), and Government Office Region (GOR) as at 31 December 2008.	11
Table 1.6: War Pensions in payment by pension type, percentage disablement and age band as at 31 December 2008.	12
Table 1.7: Average weekly amounts of pension entitlement by type, percentage disablement, and age band as at 31 December 2008.	13
Table 1.8: Supplementary allowances in payment by type of allowance and quarter as at 31 December 2008.	14
Table 1.8a: Supplementary allowances in payment by type of allowance, financial year and latest quarter, 31 March 2005 to 31 December 2008.	14

Table 1.1: War Pensions in payment by type of pension, principal scheme and quarter, 31 December 2007 to 31 December 2008

	Awards in payment at:				
	31-Dec-07	31-Mar-08	30-Jun-08	30-Sep-08	31-Dec-08
ALL IN PAYMENT	204,530	201,265	198,645	196,290	193,640
Disablement Pensioners	167,700	165,165	163,120	161,310	159,300
in receipt of an ongoing war pension					
1914 war	-	-	-	-	-
Inter-war	55	50	50	45	40
1939 war onwards	164,420	161,970	160,000	158,250	156,325
Civilian	1,715	1,680	1,645	1,620	1,585
Polish	695	675	660	645	625
Mercantile marine	810	785	765	740	720
Not known	-	~	~	5	~
War Widow(er)s	35,975	35,235	34,655	34,140	33,500
War widows pension	35,905	35,165	34,585	34,075	33,430
War widowers pension	70	70	70	70	70
Other Pensioners	855	865	870	840	840
Disablement pensioners (ALSO allowance only)	405	420	415	405	400
War orphans pension	30	25	30	30	30
War parents pension	30	30	25	25	25
Adult dependant pension	10	10	10	10	10
Unmarried dependant pension	~	~	~	~	~
Child allowance only	385	380	385	370	375

Table 1.2: War Pensions in payment by type of pension, gender, and financial year end, 31 March 2004 to 31 March 2008⁽¹⁾

	Awards in payment at:				
	31-Mar-04	31-Mar-05	31-Mar-06 ⁽¹⁾	31-Mar-07	31-Mar-08
ALL IN PAYMENT	247,585	235,300	 223,850 r	212,535	201,265
Men	193,960	184,410	175,660 r	166,910	158,455
Women	53,625	50,890	48,190 r	45,625	42,810
Disablement Pensioners	201,545	191,750	 182,800 r	173,850	165,165
Men	193,220	183,675	174,955 r	166,225	157,780
Women	8,330	8,075	7,845 r	7,625	7,385
War Widow(er)s	45,035	42,580	 40,125 r	37,795	35,235
Men	40	55	60 r	65	70
Women	44,995	42,525	40,065 r	37,730	35,165
Other Pensioners	1,005	970	 925 r	890	865
Men	700	680	645 r	615	605
Women	305	290	280 r	270	260

Note: (1) The discontinuity between the financial years 2004-05 and 2005-06, and the revisions (r) made to the previously published figures for 2005-06, are due to improvements in data processing.

Table 1.3: War Pensions flows by type of pension, and financial year, 2003-04 to 2007-08⁽¹⁾

	Financial Year:				
	2003-04	2004-05	2005-06 ⁽¹⁾	2006-07	2007-08
ALL IN PAYMENT	247,585	235,300	 223,850 r	212,535	201,265
Total intake in financial year	4,520	4,215	3,775 r	3,295	2,940
Total outflow in financial year	17,725	16,500	15,165 r	14,610	14,205
Disablement Pensioners	201,545	191,750	 182,800 r	173,850	165,165
Intake during financial year	3,260	2,955	2,700 r	2,380	2,170
Outflow during financial year	13,890	12,750	11,670 r	11,345	10,835
War Widow(er)s	45,035	42,580	 40,125 r	37,795	35,235
Intake during financial year	1,200	1,210	1,000 r	895	755
Outflow during financial year	3,740	3,665	3,460 r	3,225	3,315
Other Pensioners	1,005	970	 925 r	890	865
Intake during financial year	60	50	75 r	20	15
Outflow during financial year	95	85	35 r	40	55

Note: (1) The discontinuity between the financial years 2004-05 and 2005-06, and the revisions (r) made to the previously published figures for 2005-06, are due to improvements in data processing.

Table 1.4: Disablement Pensions in payment by degree of disablement as at 31 December 2008

Degree of disablement (Percentage)								
Men and Women	TOTAL	1914 War	Inter War	1939 War onwards	Civilian	Polish	Mercantile Marine	Not Known
ALL	159,300	-	40	156,325	1,585	625	720	~
20	62,045	-	10	61,325	330	165	210	-
30	38,075	-	10	37,365	350	160	190	-
40	22,265	-	10	21,765	270	100	120	-
50	12,395	-	~	12,110	160	55	65	-
60	7,820	-	-	7,650	95	35	35	-
70	4,745	-	~	4,600	85	25	35	-
80	3,890	-	~	3,780	65	25	20	-
90	1,360	-	~	1,310	30	5	10	-
100	5,375	-	~	5,135	175	35	30	~
Not Known ⁽¹⁾	1,325	-	-	1,280	30	10	~	-

Men

ALL	152,120	-	40	150,130	620	600	720	~
20	59,385	-	10	58,895	120	155	210	-
30	36,445	-	10	35,955	130	155	190	-
40	21,270	-	10	20,925	120	95	120	-
50	11,845	-	~	11,660	60	55	65	-
60	7,470	-	-	7,360	40	35	35	-
70	4,505	-	~	4,410	35	25	35	-
80	3,690	-	~	3,610	30	25	20	-
90	1,300	-	~	1,265	10	5	10	-
100	5,055	-	~	4,915	75	35	30	~
Not Known ⁽¹⁾	1,155	-	-	1,140	5	10	~	-

Women

ALL	7,180	-	-	6,195	960	25	-	-
20	2,660	-	-	2,435	210	10	-	-
30	1,635	-	-	1,410	220	~	-	-
40	995	-	-	845	150	~	-	-
50	550	-	-	450	100	-	-	-
60	350	-	-	295	55	~	-	-
70	240	-	-	190	45	~	-	-
80	205	-	-	170	35	-	-	-
90	60	-	-	40	20	-	-	-
100	320	-	-	220	100	~	-	-
Not Known ⁽¹⁾	165	-	-	145	25	~	-	-

Note: (1) 'Not known' consists of those entitled to a disablement pension but with no percentage disability recorded. These include clerical overrides and suspended cases

Table 1.5: Pensioners by type of pension, principal scheme (DPs), and Government Office Region (GOR) as at 31 December 2008

GOR	Disablement Pensioners										
	All Pensioners	All DPs	1914 War	Inter-war	1939 War onwards	Civilian	Polish	Mercantile Marine	Not known	War Widow(er)s	Other Pensioners ⁽²⁾
ALL	193,640	159,300	-	40	156,325	1,585	625	720	~	33,500	840
North East	12,585	11,140	-	-	11,000	55	10	75	-	1,380	65
North West	22,075	18,565	-	~	18,115	230	60	155	~	3,415	95
Yorkshire and the Humber	14,120	11,565	-	~	11,440	50	40	30	-	2,470	80
East Midlands	12,085	10,035	-	~	9,930	50	40	15	-	2,000	45
West Midlands	11,355	9,120	-	-	8,990	75	45	10	-	2,195	45
East of England	13,710	10,710	-	~	10,485	170	30	25	-	2,955	45
London	7,500	5,515	-	~	5,200	225	70	15	-	1,950	35
South East	25,190	19,845	-	10	19,440	300	35	55	-	5,255	95
South West	24,605	20,335	-	5	20,060	190	40	35	-	4,160	110
Wales	11,015	9,210	-	~	9,090	50	15	50	-	1,760	45
Scotland	18,935	16,260	-	~	16,050	70	40	95	-	2,600	75
N. Ireland	4,410	3,670	-	-	3,655	10	-	5	-	710	25
Other UK ⁽¹⁾	580	465	-	-	455	~	-	~	-	110	~
UK Unknown	940	700	-	-	680	10	~	~	-	240	5
Overseas	14,325	11,970	-	5	11,535	95	195	145	-	2,290	65
Not Known	205	195	-	-	195	~	~	-	-	5	~

Note: (1) Other UK includes Isle of Man and Channel Islands.

(2) 'Other Pensioners' includes War Orphans, War Parents, Adult Dependants, Unmarried Dependants, Juvenile Dependants, Child Allowance Only and Allowance for Lowered Standard of Occupation Only Pensioners.

Table 1.6: War Pensions in payment by pension type, percentage disablement and age band as at 31 December 2008

AGE GROUP	All Pensioners	Disablement Pensioners											War Widow(er)s	Other Pensioners ⁽²⁾
		All DPs	20%	30%	40%	50%	60%	70%	80%	90%	100%	Not Known ⁽¹⁾		
ALL	193,640	159,300	62,045	38,075	22,265	12,395	7,820	4,745	3,890	1,360	5,375	1,325	33,500	840
Under 30	1,430	1,295	655	280	110	50	30	15	15	~	25	120	20	115
30 to 34	2,310	2,240	1,125	505	270	115	75	25	25	~	20	75	50	20
35 to 39	6,460	6,250	2,805	1,545	835	385	255	115	80	15	120	100	145	60
40 to 44	8,120	7,815	3,410	1,910	1,045	505	345	170	135	25	180	95	245	55
45 to 49	10,150	9,740	4,040	2,365	1,300	755	425	240	180	65	290	75	355	55
50 to 54	9,405	8,840	3,455	2,135	1,275	685	465	245	185	50	290	55	480	90
55 to 59	9,355	8,630	3,325	2,065	1,275	685	425	255	205	60	280	55	650	80
60 to 64	12,505	11,315	4,615	2,640	1,500	830	555	355	280	85	390	70	1,085	105
65 to 69	13,430	11,830	5,020	2,615	1,525	905	550	335	305	100	400	80	1,500	100
70 to 74	20,650	18,200	8,030	4,460	2,275	1,185	710	450	375	120	475	115	2,380	70
75 to 79	20,615	16,910	7,070	4,225	2,215	1,220	675	420	370	120	470	125	3,680	25
80 to 84	27,430	20,930	7,585	4,925	3,085	1,775	1,150	720	540	205	825	115	6,480	20
85 to 89	36,870	26,705	8,390	6,420	4,220	2,440	1,610	1,025	885	380	1,170	160	10,140	30
90 to 94	12,505	7,580	2,230	1,750	1,185	755	485	325	270	115	395	65	4,910	10
95 +	2,405	1,025	295	240	150	110	65	45	40	15	45	15	1,380	5

Note: (1) 'Not known' consists of those entitled to a disablement pension but with no percentage disability recorded. These include clerical overrides and suspended cases

(2) 'Other Pensioners' includes War Orphans, War Parents, Adult Dependants, Unmarried Dependants, Juvenile Dependants, Child Allowance Only and Allowance for Lowered Standard of Occupation Only Pensioners.

Table 1.7: Average weekly amounts of pension entitlement by type, percentage disablement, and age band as at 31 December 2008

(All figures are in £s)

AGE GROUP	Disablement Pension										War Widow(er)s
	All DPs	20%	30%	40%	50%	60%	70%	80%	90%	100%	
PENSION & ALLOWANCES											
All Cases	71.62	30.24	46.96	80.42	103.69	137.79	160.95	204.28	225.95	302.71	206.37
Under 30	52.17	29.10	42.98	76.33	96.85	140.10	145.10	222.92	129.24	324.34	86.75
30 to 34	53.46	29.14	43.81	81.25	106.00	147.93	165.82	185.88	266.80	278.14	140.30
35 to 39	63.82	30.05	45.26	88.49	107.34	149.25	195.63	229.25	255.84	333.96	119.23
40 to 44	68.02	30.47	47.06	84.35	115.15	159.08	186.82	243.33	302.40	327.70	128.95
45 to 49	72.46	30.76	48.10	85.29	117.23	158.67	182.33	222.69	248.72	324.99	129.26
50 to 54	77.43	31.71	49.75	87.06	118.51	159.59	185.90	238.80	268.84	325.94	126.36
55 to 59	78.43	31.56	49.49	85.51	118.46	164.11	190.89	235.48	254.25	329.23	134.02
60 to 64	75.86	30.74	49.10	83.52	111.80	154.61	178.06	226.58	276.23	328.30	148.45
65 to 69	77.01	30.75	48.95	88.49	114.10	156.90	187.14	246.16	267.24	334.62	173.92
70 to 74	67.91	30.17	47.68	83.13	107.24	147.27	177.75	230.95	243.73	328.71	196.98
75 to 79	67.52	30.00	47.26	81.59	103.62	139.13	162.41	209.23	235.37	311.35	203.58
80 to 84	71.57	29.55	45.50	75.42	96.28	121.82	145.40	188.10	214.65	299.24	218.20
85 to 89	72.49	29.56	44.94	72.93	90.50	114.93	133.33	169.30	196.59	266.96	219.15
90 to 94	74.55	29.67	45.05	72.64	89.33	113.79	132.41	160.09	184.86	250.03	219.15
95 +	72.62	29.30	44.59	71.86	89.10	109.02	127.35	150.22	188.94	243.67	218.81
PENSION ONLY											
All Cases	51.81	28.95	43.41	57.70	72.08	86.51	101.13	115.59	130.06	143.65	109.11
Under 30	41.64	28.70	42.98	52.50	68.82	82.72	97.74	113.93	129.24	138.71	60.21
30 to 34	42.03	28.73	42.91	55.27	69.35	81.46	96.67	108.38	97.19	115.35	89.07
35 to 39	45.48	28.68	42.91	55.92	68.71	82.77	97.79	113.75	121.74	137.72	69.24
40 to 44	47.02	28.84	42.97	56.59	70.26	84.33	98.37	113.88	129.66	133.29	91.43
45 to 49	49.34	28.92	43.23	57.15	71.15	85.52	100.80	113.42	124.55	138.40	102.24
50 to 54	51.04	28.92	43.39	57.42	71.47	85.96	100.79	114.46	130.02	141.91	107.26
55 to 59	51.73	28.94	43.42	57.77	72.10	86.80	101.36	115.62	130.52	142.96	107.55
60 to 64	51.48	29.00	43.45	57.90	72.34	86.90	100.91	115.52	130.40	144.29	107.87
65 to 69	51.16	29.00	43.48	58.00	72.48	86.70	101.31	116.02	130.56	144.92	108.47
70 to 74	48.68	29.00	43.50	57.97	72.49	87.02	101.47	115.91	130.57	144.84	108.83
75 to 79	49.68	28.99	43.50	58.01	72.50	86.98	101.53	116.04	130.58	145.08	109.00
80 to 84	54.03	28.99	43.50	58.02	72.51	87.03	101.50	116.07	130.58	145.08	109.61
85 to 89	56.93	29.00	43.50	58.01	72.52	87.03	101.55	116.04	130.51	145.09	109.95
90 to 94	59.01	29.01	43.51	58.03	72.53	87.04	101.52	115.97	130.59	145.10	110.22
95 +	59.03	29.01	43.52	58.00	72.53	87.06	101.57	116.04	130.59	145.05	110.36
ALLOWANCES ONLY (including Widows special allowance)											
All Cases	19.81	1.29	3.55	22.72	31.61	51.28	59.81	88.70	95.89	159.06	97.26
Under 30	10.53	0.43	0.00	23.83	28.03	57.36	47.36	108.99	0.00	185.63	26.54
30 to 34	11.43	0.41	0.91	25.98	36.65	66.48	69.16	77.50	169.62	162.79	51.23
35 to 39	18.33	1.38	2.35	32.57	38.63	66.48	97.84	115.50	134.11	196.24	49.99
40 to 44	21.01	1.63	4.08	27.76	44.89	74.75	88.45	129.45	172.73	194.41	37.52
45 to 49	23.12	1.83	4.87	28.14	46.08	73.15	81.53	109.27	124.17	186.58	27.02
50 to 54	26.40	2.79	6.37	29.64	47.04	73.64	85.11	124.34	138.81	184.04	19.10
55 to 59	26.70	2.63	6.07	27.74	46.37	77.31	89.53	119.86	123.73	186.27	26.48
60 to 64	24.38	1.74	5.65	25.62	39.45	67.72	77.15	111.06	145.83	184.01	40.57
65 to 69	25.85	1.75	5.47	30.49	41.62	70.21	85.83	130.15	136.68	189.71	65.46
70 to 74	19.23	1.17	4.18	25.15	34.75	60.25	76.28	115.04	113.16	183.87	88.16
75 to 79	17.83	1.01	3.76	23.58	31.12	52.16	60.88	93.19	104.79	166.27	94.58
80 to 84	17.54	0.56	2.00	17.41	23.77	34.79	43.90	72.03	84.07	154.17	108.59
85 to 89	15.56	0.56	1.44	14.91	17.97	27.89	31.78	53.26	66.07	121.87	109.20
90 to 94	15.54	0.66	1.54	14.61	16.80	26.76	30.89	44.12	54.27	104.94	108.94
95 +	13.59	0.29	1.07	13.86	16.56	21.96	25.78	34.18	58.35	98.62	108.45

Table 1.8: Supplementary allowances in payment by type of allowance and quarter as at 31 December 2008

Allowance type	Awards in payment at:				
	31-Dec-07	31-Mar-08	30-Jun-08	30-Sep-08	31-Dec-08
ALL ALLOWANCES	172,585	169,470	167,055	164,530	161,870
Age 80 addition (NI) (Disablement & Widow(er))	1,615	1,565	1,520	1,480	1,430
Age addition - Disablement	42,525	41,535	40,700	39,945	39,100
Age addition – Widows	32,280	31,555	31,010	30,540	29,915
Allowance for lowered standard of occupation	11,505	11,485	11,490	11,495	11,530
Clothing allowance	4,150	4,085	4,030	3,965	3,890
Comforts allowance	9,160	9,055	8,975	8,875	8,755
Constant attendance allowance	3,150	3,105	3,085	3,040	2,975
Exceptionally severe disablement allowance	605	605	605	600	595
Severe disablement occupational allowance	10	10	10	10	5
Invalidity allowance	6,805	6,750	6,700	6,660	6,595
Mobility supplement	15,500	15,350	15,235	15,130	14,995
Unemployability supplement	8,130	8,050	7,970	7,895	7,800
Modified unemployability supplement	35	35	35	35	35
Additional allowance spouse	1,780	1,745	1,705	1,675	1,635
Modified allowance for spouse	205	200	195	190	185
Additional allowance dependant	~	~	~	~	~
Additional allowance child	1,210	1,235	1,265	1,130	1,200
Child allowance	890	900	920	780	815
Over age infirm child allowance	315	305	305	300	300
Modified over age infirm child allowance	10	10	10	10	10
Temporary allowance Widow(er)	180	180	180	195	210
Widow(er)s rent allowance	465	425	430	425	440
Widow(er)s special allowance	32,060	31,285	30,680	30,140	29,470

Table 1.8a: Supplementary allowances in payment by type of allowance, financial year and latest quarter, 31 March 2005 to 31 December 2008

	Awards in payment at:				
	31-Mar-05	31-Mar-06 ⁽¹⁾ r	31-Mar-07	31-Mar-08	31-Dec-08
ALL ALLOWANCES	202,740 	191,145 r	180,475	169,470	161,870
Average Weekly Allowances Entitlement (in £s)					
Disablement Pensioners	16.54	17.08 r	18.05	18.93	19.81
War Widow(er)s	84.24	86.66 r	90.32	92.90	97.26

Note: (1) The discontinuity between March 2005 and March 2006, and the revisions (r) made to the previously published figures for March 2006, are due to improvements in data processing.

Section 2: Number of claims, awards and appeals

Table 2.1: Claims registered during quarter, Q4-2007 to Q4-2008.....	16
Table 2.1a: Claims registered during quarter by claim type, Q4-2007 to Q4-2008.....	17
Table 2.2: Yearly War Pension claims by outcome, 2004-04 to 2007-08.	19
Table 2.2a: Quarterly War Pension claims by outcome, Q4-2007 to Q4-2008.....	20
Table 2.3: Successful gratuity & nil percentage awards cleared by year, 2003-04 to 2007-08.	21
Table 2.4: First claims to supplementary allowances cleared by allowance type and outcome, Q4-2007 to Q4-2008.....	22
Table 2.4a: First claims to supplementary allowances automatically awarded by allowance type, Q4-2007 to Q4-2008.....	23
Table 2.5: Appeals cleared (to Pensions Appeal Tribunal or during preparation) by type, Q4-2007 to Q4-2008.....	23
Table 2.6: Pensions Appeal Tribunal decisions by claim, Q4-2007 to Q4-2008.....	24

Table 2.1: Claims registered during quarter, Q4-2007 to Q4-2008

Claim type	Claims registered during:				
	Q4-2007	Q1-2008	Q2-2008	Q3-2008	Q4-2008
All Claims	7,860	9,145	8,275	8,270	7,785
Disablement claims	3,810	4,600	4,025	3,905	3,835
War Widow(er)s claims	415	435	425	440	365
Supplementary allowance claims	1,325	1,435	1,465	1,495	1,370
Supplementary allowance reviews	725	980	785	725	655
Medical expenses	980	1,045	1,015	1,005	895
Appeals	605	650	560	700	665

Table 2.1a: Claims registered during quarter by claim type, Q4-2007 to Q4-2008

Claim type	Claims registered during:				
	Q4-2007	Q1-2008	Q2-2008	Q3-2008	Q4-2008
Disablement claims	3,810	4,600	4,025	3,905	3,835
Current invaliding	255	455	230	235	175
First claim to pension	1,245	1,850	1,475	1,410	1,505
Further condition	760	805	805	830	795
Deterioration	935	980	1,010	995	930
Departmental review	180	40	35	30	35
Conditional list review	430	475	465	400	400
War Widow(er)s claims	415	435	425	440	365
Widow(er)s	385	415	410	415	350
Restored Widow(er)s	25	20	15	25	10
Review Widow(er)s	~	~	~	~	-
Supplementary allowance claims	1,325	1,435	1,465	1,495	1,370
Allowance for lowered standard of occupation	135	145	165	145	185
Clothing allowance	30	40	60	25	35
Constant attendance allowance	110	105	120	110	120
Mobility supplement	255	285	275	315	275
Unemployability supplement	70	85	65	75	60
Additional allowance spouse	20	25	25	20	25
Additional allowance dependant	-	-	-	-	-
Additional allowance child	30	20	30	25	35
Child allowance only	10	~	~	10	~
Widow(er)s child allowances	-	-	-	-	-
Widow(er)s rent allowance	80	45	70	105	65
Temporary allowance Widow(er)	105	100	110	120	130
Funeral expenses	480	570	540	540	445
Supplementary allowance reviews⁽¹⁾	725	980	785	725	655
Allowance for lowered standard of occupation	350	435	355	330	290
Constant attendance allowance	35	25	40	25	35
Mobility supplement	60	50	45	50	60
Unemployability supplement	115	120	120	85	110
Additional allowance spouse	50	285	55	40	55
Additional allowance dependant	-	-	~	-	-
Child allowance ⁽²⁾	110	70	170	190	110
Appeals	605	650	560	700	665
Entitlement - Disablement	185	180	160	200	195
Entitlement - Widow(er)s	35	40	45	55	35
Assessment	295	310	255	345	330
Supplementary Allowances	75	95	75	85	80
Miscellaneous	15	20	25	15	20

Table 2.1a: Claims registered during quarter by claim type, Q4-2007 to Q4-2008 (Continued)

Claim type	Claims registered during:				
	Q4-2007	Q1-2008	Q2-2008	Q3-2008	Q4-2008
Medical expenses⁽³⁾	980	1,045	1,015	1,005	895
Appliance	5	10	5	~	5
Chiropody	~	~	~	-	~
Convalescence	35	35	35	40	20
Dental	25	15	35	20	20
Hearing aid	15	15	20	10	10
Home nursing equipment	15	15	15	10	10
Hospital travel expenses	60	60	65	70	75
House adaptation grant	55	50	55	55	35
Prescription	10	10	10	20	10
Priority treatment	140	145	135	110	75
Private treatment	20	20	20	15	10
Provision of treatment	275	250	270	275	255
Remedial treatment	245	340	280	315	290
Skilled nursing care	10	15	10	10	5
Spectacles	25	20	20	20	20
Treatment allowance (inc. loss of earnings)	40	45	35	35	45

Note: (1) Reviews of allowances which involve rates of pay are traditionally held in the first quarter of the year.

(2) Contains widow(er)s' child allowance and child allowance only reviews.

(3) Excludes NI and Eire.

Table 2.2: Yearly War Pension claims by outcome, 2003-04 to 2007-08

Claim Type	Financial Year:									
	2003-04		2004-05		2005-06 ⁽²⁾		2006-07		2007-08	
	Number	%	Number	%	Number	%	Number	%	Number	%
All First Claims	7,920		7,590		7,515 r		6,765		5,750	
Awarded 20–100%	1,840	23%	1,725	23%	1,740	r 23%	1,525	23%	1,370	24%
Awarded 1-19%	3,295	42%	3,450	45%	3,465	r 46%	3,155	47%	2,555	44%
Awarded 0%	1,935	24%	1,590	21%	1,495	r 20%	1,370	20%	1,185	21%
Rejections	850	11%	825	11%	815	r 11%	715	11%	645	11%
All Second/Subsequent Claims	11,585		11,035		9,375 r		8,480		7,365	
Awarded 20–100%	55	0%	55	0%	50	r 1%	45	1%	40	0%
Awarded 1-19%	55	0%	45	0%	60	r 1%	50	1%	30	1%
Awarded 0%	50	0%	55	1%	55	r 1%	40	0%	45	1%
Increased assessments	4,120	36%	3,995	36%	3,400	r 36%	3,160	37%	2,795	38%
Maintained assessments	6,175	53%	5,980	54%	4,960	r 53%	4,395	52%	3,830	52%
Reduced assessments	425	4%	385	3%	340	r 4%	320	4%	215	3%
Rejections	705	6%	515	5%	510	r 5%	475	6%	400	5%
All Widow(er)s Claims⁽¹⁾	2,465		2,220		2,040 r		1,930		1,560	
Awards	1,120	45%	1,105	50%	905	r 44%	825	43%	665	43%
Rejections	1,345	55%	1,115	50%	1,135	r 56%	1,105	57%	895	57%

Note: (1) Includes restored Widows; Since 2005/06 figures do not include Widow(er)s' reviews.

(2) The discontinuity in this table between 2004/05 and 2005/06, and the revisions (r) made to the previously published figures for 2005/06, are due to improvements in data processing.

Table 2.2a: Quarterly War Pension claims by outcome, Q4-2007 to Q4-2008

Claim type		Claims cleared during:				
		Q4-2007	Q1-2008	Q2-2008	Q3-2008	Q4-2008
First claims						
Current Invaliding	All	160	290	305	190	210
	Awarded 20-100%	85	120	130	75	85
	Awarded 1-19%	35	75	75	55	60
	Awarded 0%	~	~	~	-	~
	Rejected	30	90	95	55	60
First Claim to Pension	All	1,045	1,060	1,310	1,515	1,730
	Awarded 20-100%	190	185	225	310	360
	Awarded 1-19%	470	480	645	790	870
	Awarded 0%	275	295	320	290	315
	Rejected	110	105	120	130	185
Second/Subsequent claims						
Further Condition	All	645	625	785	695	980
	Awarded 20-100%	~	5	10	5	5
	Awarded 1-19%	5	5	10	15	15
	Awarded 0%	5	10	5	5	15
	Increased	295	295	395	340	465
	Maintained	240	230	270	250	370
	Reduced	10	~	~	5	10
	Rejected	85	75	95	75	95
Conditional List Review	All	480	415	335	495	515
	Awarded 20-100%	~	5	5	~	~
	Awarded 1-19%	-	-	~	-	-
	Awarded 0%	-	-	-	-	-
	Increased	60	55	40	50	25
	Maintained	370	335	270	430	460
	Reduced	45	15	15	10	25
	Rejected	~	~	~	~	~

Table 2.2a: Quarterly War Pension claims by outcome, Q4-2007 to Q4-2008 (Continued)

Claim type		Claims cleared during:				
		Q4-2007	Q1-2008	Q2-2008	Q3-2008	Q4-2008
Deterioration	All	610	670	730	845	995
Claim	Awarded 20-100%	5	~	~	~	~
	Awarded 1-19%	-	~	~	-	-
	Awarded 0%	~	~	~	-	-
	Increased	275	335	370	435	480
	Maintained	320	325	350	405	505
	Reduced	5	~	-	~	~
	Rejected	~	~	~	~	5
Departmental	All	155	35	30	30	30
Review	Awarded 20-100%	-	~	~	~	~
	Awarded 1-19%	-	~	~	-	~
	Awarded 0%	-	~	-	-	~
	Increased	~	~	~	5	10
	Maintained	150	20	20	15	5
	Reduced	~	~	~	~	~
	Rejected	~	~	~	5	5
Widow(er)s' Claims⁽¹⁾						
	All	380	385	405	420	360
	Awards	165	165	170	200	185
	Rejections	215	220	235	220	175

Note: (1) Figures include restored Widows; Figures do not include widow(er)s' reviews.

Table 2.3: Successful gratuity & nil percentage awards cleared by year, 2003-04 to 2007-08

	Financial Year:				
	2003-04	2004-05	2005-06 ⁽¹⁾	2006-07	2007-08
All Nil and Gratuity Awards	5,340	5,145 	5,115 r	4,640	3,840
Nil Awards	1,985	1,645	1,585 r	1,440	1,255
01 - 05%	1,240	1,265	1,370 r	1,230	960
06 - 14%	1,815	1,955	1,880 r	1,725	1,365
15 - 19%	295	275	275 r	245	265

Note: (1) The discontinuity in this table between 2004/05 and 2005/06, and the revisions (r) made to the previously published figures for 2005/06, are due to improvements in data processing.

Table 2.4: First claims to supplementary allowances cleared by allowance type and outcome, Q4-2007 to Q4-2008⁽¹⁾

Allowance type		First awards made during:				
		Q4-2007	Q1-2008	Q2-2008	Q3-2008	Q4-2008
Allowance for lowered standard of occupation	All	170	125	140	155	170
	Awarded	135	105	115	130	140
	Rejected	35	25	25	20	30
Clothing allowance	All	35	40	45	35	30
	Awarded	15	20	20	15	15
	Rejected	20	20	25	20	15
Constant attendance allowance	All	110	105	115	95	115
	Awarded	55	55	65	50	65
	Rejected	55	50	50	45	50
Exceptionally severe disablement allowance	All	15	20	20	15	25
	Awarded	15	20	20	15	25
	Rejected	-	-	-	-	-
Severe disablement occupational allowance	All	-	~	-	-	-
	Awarded	-	~	-	-	-
	Rejected	-	-	-	-	-
Mobility supplement	All	275	230	255	290	320
	Awarded	160	130	160	170	200
	Rejected	115	100	95	120	120
Unemployability supplement	All	60	60	60	70	50
	Awarded	45	55	45	50	40
	Rejected	15	5	10	20	15
Additional allowance spouse	All	25	25	25	20	15
	Awarded	15	20	10	10	10
	Rejected	10	5	10	10	10
Additional allowance dependant	All	-	-	-	-	-
	Awarded	-	-	-	-	-
	Rejected	-	-	-	-	-
Additional allowance child	All	20	15	15	15	20
	Awarded	20	15	15	15	20
	Rejected	~	~	~	~	~
Child allowance only	All	10	5	~	10	~
	Awarded	~	~	~	5	~
	Rejected	5	~	-	~	~
Widow(er)s child allowances	All	~	~	~	-	5
	Awarded	~	~	~	-	5
	Rejected	~	-	~	-	-
Widow(er)s rent allowance	All	10	10	15	15	15
	Awarded	5	10	10	10	15
	Rejected	~	-	~	~	-
Temporary allowance Widow(er)	All	105	95	105	115	130
	Awarded	105	95	105	115	125
	Rejected	-	-	-	~	~
Funeral expenses	All	450	495	515	505	405
	Awarded	175	205	215	250	210
	Rejected	270	285	300	255	195

Note: (1) Awards processed in the quarter. Entitlement may be backdated to a previous quarter.

Table 2.4a: First claims to supplementary allowances automatically awarded by allowance type⁽¹⁾, Q4-2007 to Q4-2008

Allowance type	First awards made during:				
	Q4-2007	Q1-2008	Q2-2008	Q3-2008	Q4-2008
Age – 80 addition (NI) (Disablement & Widow(er))	10	15	20	15	10
Age – disablement	190	225	205	225	225
Age – Widow(er)s	145	140	165	170	150
Comforts allowance	10	10	5	10	5
Invalidity allowance	10	10	~	10	~

Note: (1) Awards processed in the quarter. Entitlement may be backdated to a previous quarter.

Table 2.5: Appeals cleared (to Pensions Appeal Tribunal or during preparation) by type, Q4-2007 to Q4-2008

Appeals cleared	Appeals cleared during:				
	Q4-2007	Q1-2008	Q2-2008	Q3-2008	Q4-2008
All Appeals Cleared	780	665	610	555	745
Entitlement - Disablement	240	215	185	170	215
Entitlement - Widow(er)s	55	30	40	25	70
Assessment	350	350	295	260	340
Supplementary Allowances	105	70	65	75	105
Temporary Allowances	-	-	-	-	-
Miscellaneous	30	10	30	20	15

Table 2.6: Pensions Appeal Tribunal decisions by claim, Q4-2007 to Q4-2008

	Decisions made during:									
	Q4-2007		Q1-2008		Q2-2008		Q3-2008		Q4-2008	
	Number	%	Number	%	Number	%	Number	%	Number	%
Entitlement Appeals	275		210		220		205		160	
<u>Disablement</u>										
All	210		165		190		175		135	
Allowed	75	36%	55	34%	75	39%	65	38%	65	47%
Disallowed	135	64%	105	66%	120	61%	110	62%	70	53%
<u>Widow(er)s</u>										
All	70		50		30		30		25	
Allowed	20	26%	10	16%	~	10%	5	17%	~	12%
Disallowed	50	74%	40	84%	25	90%	25	83%	25	88%
<u>Overall</u>										
Allowed	90	33%	65	30%	75	35%	70	35%	65	42%
Disallowed	185	67%	150	70%	145	65%	130	65%	95	58%
Assessment Appeals	325		305		290		280		185	
Increased	105	33%	110	37%	110	37%	110	39%	75	42%
Upheld	215	66%	190	62%	180	63%	170	61%	105	57%
Reduced	~	1%	~	1%	~	0%	~	0%	~	1%
Allowance Appeals	75		70		50		45		50	
Allowed	20	26%	15	24%	10	23%	15	28%	15	27%
Disallowed	55	74%	55	76%	40	77%	35	72%	35	73%

Glossary of pensions and allowances

Age Allowance

This may be paid to a war disablement pensioner (man or woman) who is aged 65 or over and whose disablement is assessed at 40% or more.

Allowance for Lowered Standard of Occupation (ALSO)

This may be paid if a pensioner's earning capacity is reduced because their pensioned disablement permanently prevents them following their regular occupation. To gain entitlement new claimants must be under age 65, with a service disablement of at least 40% when they make their claim. This allowance plus their basic War Disablement Pension cannot exceed the 100% disablement pension rate.

Child Allowance Only

There is a Child Allowance Only Pension in payment, i.e. no award has been given to War Widow(er)s Pension but her child has been awarded.

Clothing Allowance (CLOT)

This may be paid if the disablement causes exceptional wear and tear on clothing.

Comforts Allowance (COMF)

This may be paid to a severely disabled pensioner who is receiving Constant Attendance Allowance or Unemployability Supplement or both. It is intended to help with the extra expenses associated with severe disablement.

Constant Attendance Allowance (CAA)

This may be paid to a pensioner who needs regular personal attention because of their pensioned disablement and that disablement is assessed at 80% or more. It is payable at one of four rates. The rate varies according to the level of attendance they need.

Disablement Pension (DP)

This is paid at a rate which varies according to the degree of disablement. The degree of disablement is assessed on a percentage basis by the War Pension Agency medical advisors.

Elderly Widow(er)'s Age Allowance

A war widow(er) may receive an additional allowance at age 65 which is increased at age 70 and again at age 80.

Exceptionally Severe Disablement Allowance (ESDA)

This may be paid to a pensioner who is receiving Constant Attendance Allowance at one of the two highest rates, or would be receiving it if they were not in hospital.

Funeral Expenses (FE)

Funeral expenses may be paid if the pensioner died as a result of his service disablement, or died while having treatment for that disablement in hospital, or was entitled to Constant Attendance Allowance, or was at the time of his death 80% or more disabled and receiving Unemployability Supplement.

Invalidity Allowance (IVA)

This may be paid to a pensioner receiving Unemployability Supplement. The rate varies according to the age at which unemployability began.

Modified Over Age Infirm Allowance (MOIA)

Compensation/Allowances (including that paid to children living in the Irish Republic or Overseas) due to infirmity are taken into account when calculating an award of OAIA and adjustments are made if necessary. (See OAIA below)

Modified Unemployability Supplement (MSUP)

The basic conditions of eligibility to UNSUPP for a pensioner living abroad (including the Irish Republic and the Channel Islands) are the same as for the UK, however, if they become eligible for Retirement Pension or other benefit payable out of the public funds of that country then UNSUPP may be adjusted with that benefit, or paid at a nominal rate to allow continued payment of comforts allowance.

Orphan's Pension

This may be payable to a child who has lost both parents.

Over Age Infirm Allowance (OAIA)

Over Age Infirm Allowance for children of deceased pensioners unable to support themselves dates back to the 1914 War. The allowance can be awarded or continued beyond the normal age limits on the grounds of infirmity if the ailment is of a nature which is likely to prevent the person from earning a living either permanently or for a prolonged period and infirmity commenced before age 16. The person is still referred to as a child even though they may be quite elderly.

Rent Allowance (RENT)

A war widow(er) with a child or children may be eligible for a rent allowance.

Severe Disablement Occupational Allowance (SDOA)

This may be paid to a pensioner who is entitled to Constant Attendance Allowance at one of the two highest rates, but who still normally has a gainful occupation.

Temporary Allowance for Widow(er)s (TAW)

This may be paid to a widow(er), irrespective of the cause of their spouse's death, if he/she were awarded Unemployability Supplement or Constant Attendance Allowance or both. The allowance is approximately equal to the disablement pension and allowances paid to their late spouse. It is paid for the first 26 weeks of widowhood.

Treatment Allowance (TA)

This is equivalent to a disablement pension paid at the 100% rate. It may be paid instead of a disablement pension to a pensioner who incurs a loss of earnings as a result of receiving treatment for their pensioned disablement.

Unemployability Supplement (UNSUPP)

This may be paid to a pensioner who is unemployable or virtually unemployable as a result of the war pensioned disablement. To gain entitlement, new claimants must be under age 65, with a pensioned disablement assessed at 60% or more when they make their claim. Additional allowances may be paid for a spouse and a child or children.

War Pensioner's Mobility Supplement (WPMS)

This is intended to help with the mobility costs of a pensioner who is unable to walk, or virtually unable to walk. New claimants must have a service disablement of at least 40%. It is paid to double amputees and to those pensioners who need help getting about because they are both deaf and blind as a result of their pensioned disablement.

War Widow(er)'s Pension (WWP)

The standard rate of pension may be paid if the widow(er) has a dependant child, or is over 40, or is incapable of self-support.

The lower rate is paid to childless widow(er)s under the age of 40. If the spouse was receiving Constant Attendance Allowance, or at the time of his/her death was 80% or more disabled and receiving Unemployability Supplement, a War Widow(er)s Pension is awarded automatically irrespective of the cause of death.

War Widow(er)'s Special Allowance

This is a Supplementary Pension payable to "pre-1973 war widow(er)s" (the widow(er)s of Service personnel who died or left the services before 31st March 1973, and who did not benefit from the improvements made from that date to the MOD's Armed Forces Pension Scheme).

Glossary of terms and conventions

Adult Dependant

Adult relatives, i.e. sister, brother, aunt or uncle etc, for whom the service person was financially responsible.

Appeal

An appeal provides a person with an impartial re-examination of the decision under appeal.

Cleared

Where the work by the Service Personnel and Veterans Agency (SPVA) on a specific task has been fully completed.

Conditional List Review

Conditional List Review cases arise because SPVA Medical Services have previously made an interim assessment for a limited period because the level of disablement was likely to change. A review date is calculated so that disablement can be reassessed before the given period expires.

Current Invaliding

Personnel invalided from the Forces and their case referred direct to the SPVA by Ministry of Defence for War Pensions consideration.

Eligible War Pension Claimant

A claimant is eligible for consideration under the WPS where disablement or death has occurred as a result of Service in HM Forces, prior to 6 April 2005. In addition, awards may also be made where disablement or death has occurred as a result of:

- War-time Service in the Naval Auxiliary Service, or the Mercantile Marine
- Service in the Polish Forces under British command during World War Two

Pensions, allowances or other payments may also be awarded where the disablement or death of a civilian or a member of a civil defence organisation is the direct result of an injury sustained as a result of enemy action in World War Two.

Gratuity

A single payment where war disablement has been accepted, but the disablement has been assessed at less than 20%.

Outcome

The final decision on a claim or action.

PAT

Pensions Appeal Tribunal.

Provision of Treatment

The reimbursement of Treatment/Medical expenses for War Pensioners living abroad.

Received

When a claim, appeal or piece of correspondence has been received by the SPVA.

Registered

When the case or claim is registered on the War Pension Computer System.

Restored Widow(er)

A war widow(er) whose War Widow(er)s Pension was withdrawn on his/her remarriage and who subsequently re-claims the pension on becoming widowed again, legally separated, or divorced.

Unmarried Dependant

Partner who lived with the ex-service person for at least 6 months before his enlistment, was maintained by him and who has borne his child.

War

1914 War	Disabled due to service between 4 August 1914 and 30 September 1921.
Inter War	Disabled due to service between 1 October 1921 and 2 September 1939.
1939 Onwards	Disabled due to service from 3 September 1939 to date.

War Orphan

Child of deceased service person who has no surviving mother or father. Child whose mother was divorced from a service person at the time of death. Child who is not in the care of the surviving parent.

War Parent

Parent of the deceased service person.

Widow(er)

Spouse of ex-service person whose death was whilst in service or related to a disablement due to service from 4 August 1914 to date.

From 8 April 2002 a change in the law governing the War Pensions Scheme means that the provisions for war widowers have been equalised to align with those available to war widows. This change in the war pension law applies from the 8 April 2002 onwards and means that war widowers are now entitled, as appropriate, to the same basic pension, supplementary pension and allowances (e.g. in respect of any dependant children) as war widows. In particular, the means-testing element previously applied to war widowers' claims and pensions has been removed.

Appendix – Changes to the publication

Due to improvements in data processing, some tables within the publication have been updated. As such, figures may be different to those previously published.

The table below documents these changes and the revisions made, where applicable.

Publication in which revision was made	Number of Revised Table	Reason for Revision	Period for which Revisions have been Published
June 2008	1.5	Previously unidentified codes have been re-classified, therefore reducing the number of cases with a 'Not Known' Government Office Region, and increasing the numbers in Wales, Scotland, Northern Ireland, Other UK and creating the 'UK Unknown' Category.	March 2003 – March 2008
September 2008	1.7	More accurate means of calculating the average amounts paid have been implemented, therefore slightly increasing previously published figures for average amounts received by War Widow(er)s.	March 2007 – June 2008

Revisions can be found by going to <http://www.dasa.mod.uk> and clicking on 'National Statistic Publications' then 'War Pension Statistics' and 'Historical'.

Revisions prior to March 2007 are available upon request to dasa-info@dasa-office@mod.uk